

# Product datasheet

Specifications



## Conduit fixing clip – for 25 mm - white UK25W

EAN Code: 5061089314223

### Main

Product or component type	Conduit clip
Colour tint	White
Quantity per set	Set of 50

### Complementary

Product destination	diameter: 25 mm conduit
Material	UPVC (unplasticized polyvinyl chloride)
Standards	BS 4607-5

### Packing Units

Unit Type of Package 1	PCE
Number of Units in Package 1	1
Package 1 Height	2.800 cm
Package 1 Width	2.800 cm
Package 1 Length	2.800 cm
Package 1 Weight	4.000 g
Unit Type of Package 2	CAR
Number of Units in Package 2	50
Package 2 Height	13.400 cm
Package 2 Width	12.800 cm
Package 2 Length	12.800 cm
Package 2 Weight	200.000 g

### Contractual warranty

Warranty 12 months

# Product datasheet

Specifications



## Conduit fixing clip – for 25 mm – black UK25B

EAN Code: 5061089314216

### Main

Product or component type	Conduit clip
Colour tint	Black
Quantity per set	Set of 50

### Complementary

Product destination	diameter: 25 mm conduit
Material	UPVC (unplasticized polyvinyl chloride)
Standards	BS 4607-5

### Packing Units

Unit Type of Package 1	PCE
Number of Units in Package 1	1
Package 1 Height	2.800 cm
Package 1 Width	2.800 cm
Package 1 Length	2.800 cm
Package 1 Weight	4.000 g
Unit Type of Package 2	CAR
Number of Units in Package 2	50
Package 2 Height	13.400 cm
Package 2 Width	12.800 cm
Package 2 Length	12.800 cm
Package 2 Weight	200.000 g

### Contractual warranty

Warranty 12 months

# Product datasheet

Specifications



## Conduit fixing clip – for 20 mm - white UK20W

EAN Code: 5061089314209

### Main

Product or component type	Conduit clip
Colour tint	White
Quantity per set	Set of 50

### Complementary

Product destination	diameter: 20 mm conduit
Material	UPVC (unplasticized polyvinyl chloride)
Standards	BS 4607-5

### Packing Units

Unit Type of Package 1	PCE
Number of Units in Package 1	1
Package 1 Height	1.600 cm
Package 1 Width	3.400 cm
Package 1 Length	3.300 cm
Package 1 Weight	5.000 g
Unit Type of Package 2	CAR
Number of Units in Package 2	50
Package 2 Height	13.400 cm
Package 2 Width	12.800 cm
Package 2 Length	12.800 cm
Package 2 Weight	332.9 g

### Contractual warranty

Warranty 12 months

# Product datasheet

Specifications



## Conduit fixing clip – for 20 mm - black UK20B

EAN Code: 5061089314193

### Main

Product or component type	Conduit clip
Colour tint	Black
Quantity per set	Set of 50

### Complementary

Product destination	diameter: 20 mm conduit
Material	UPVC (unplasticized polyvinyl chloride)
Standards	BS 4607-5

### Packing Units

Unit Type of Package 1	PCE
Number of Units in Package 1	1
Package 1 Height	1.600 cm
Package 1 Width	3.400 cm
Package 1 Length	3.300 cm
Package 1 Weight	5.000 g
Unit Type of Package 2	CAR
Number of Units in Package 2	50
Package 2 Height	13.400 cm
Package 2 Width	12.800 cm
Package 2 Length	12.800 cm
Package 2 Weight	332.9 g

### Contractual warranty

Warranty 12 months

# Product datasheet

Specifications



## Mounting box - 1 gang - 44 mm - square corner TBU441W

EAN Code: 5061089314186

### Main

Range	Mini Trunking
Device application	Installation
Product or component type	Mounting box
Colour tint	White
Quantity per set	Set of 10

### Complementary

Trunking dimension	38 x 25 mm 38 x 16 mm 38 x 38 mm 25 x 16 mm 16 x 16 mm
Number of gangs	1 gang
Mounting support	Trunking
Length	87 mm
Device mounting	Flush
Material	UPVC (unplasticized polyvinyl chloride)
cabl e entry	Mini entries
Shape	Square corner
Width	87 mm
Depth	44 mm

### Environment

Standards	BS 4662
-----------	---------

### Packing Units

Unit Type of Package 1	PCE
Number of Units in Package 1	1
Package 1 Height	9.190 cm
Package 1 Width	9.190 cm
Package 1 Length	9.190 cm
Package 1 Weight	101.500 g

### Contractual warranty

Warranty

12 months



# Product datasheet

Specifications



## Mounting box - 1 gang - 32 mm - square corner TBU321W

EAN Code: 5061089314148

### Main

Range	Mini Trunking
Device application	Installation
Product or component type	Mounting box
Colour tint	White
Quantity per set	Set of 10

### Complementary

Trunking dimension	25 x 16 mm 38 x 38 mm 38 x 16 mm 38 x 25 mm 16 x 16 mm
Number of gangs	1 gang
Mounting support	Trunking
Length	87 mm
Device mounting	Flush
Material	UPVC (unplasticized polyvinyl chloride)
cabl e entry	Mini entries
Shape	Round corner
Width	87 mm
Depth	32 mm

### Environment

Standards	BS 4662
-----------	---------

### Packing Units

Unit Type of Package 1	PCE
Number of Units in Package 1	1
Package 1 Height	8.600 cm
Package 1 Width	3.400 cm
Package 1 Length	8.800 cm
Package 1 Weight	65.000 g

Disclaimer: This documentation is not intended as a substitute for and is not to be used for determining suitability or reliability of these products for specific user applications

# Product datasheet

Specifications



## Mounting box - 2 gang - 32 mm - round corner TBR322W

EAN Code: 5061089314124

### Main

Range	Mini Trunking
Device application	Installation
Product or component type	Mounting box
Colour tint	White
Quantity per set	Set of 10

### Complementary

Trunking dimension	25 x 16 mm 38 x 16 mm 38 x 38 mm 38 x 25 mm 16 x 16 mm
Number of gangs	2 gangs
Mounting support	Trunking
Length	147 mm
Device mounting	Flush
Material	UPVC (unplasticized polyvinyl chloride)
cable entry	Mini entries
Shape	Round corner
Width	87 mm
Depth	32 mm

### Environment

Standards	BS 4662
-----------	---------

### Packing Units

Unit Type of Package 1	PCE
Number of Units in Package 1	1
Package 1 Height	3.400 cm
Package 1 Width	8.600 cm
Package 1 Length	14.600 cm
Package 1 Weight	100.000 g

### Contractual warranty

Warranty

12 months



Disclaimer: This documentation is not intended as a substitute for and is not to be used for determining suitability or reliability of these products for specific user applications

# Product datasheet

Specifications



## Mounting box - 1 gang - 32 mm - round corner TBR321W

EAN Code: 5061089314100

### Main

Range	Mini Trunking
Device application	Installation
Product or component type	Mounting box
Colour tint	White
Quantity per set	Set of 10

### Complementary

Trunking dimension	25 x 16 mm 38 x 38 mm 38 x 16 mm 38 x 25 mm 16 x 16 mm
Number of gangs	1 gang
Mounting support	Trunking
Length	87 mm
Device mounting	Flush
Material	UPVC (unplasticized polyvinyl chloride)
cabl e entry	Mini entries
Shape	Round corner
Width	87 mm
Depth	32 mm

### Environment

Standards	BS 4662
-----------	---------

### Packing Units

Unit Type of Package 1	PCE
Number of Units in Package 1	1
Package 1 Height	8.600 cm
Package 1 Width	3.400 cm
Package 1 Length	8.800 cm
Package 1 Weight	65.000 g

### Contractual warranty

Warranty	12 months
----------	-----------

# Product datasheet

Specifications



## Bending Spring – heavy gauge – for 32 mm conduit SPH32

EAN Code: 5061089314087

### Main

Product or component type	Bending spring
Product specific application	Heavy duty
Quantity per set	Set of 1

### Complementary

Product destination	diameter: 32 mm conduit
---------------------	-------------------------

Material Steel

### Packing Units

Unit Type of Package 1	PCE
Number of Units in Package 1	1
Package 1 Height	3.000 cm
Package 1 Width	3.000 cm
Package 1 Length	58.000 cm
Package 1 Weight	740.000 g
Unit Type of Package 2	CAR
Number of Units in Package 2	15
Package 2 Height	10.000 cm
Package 2 Width	14.000 cm
Package 2 Length	64.000 cm
Package 2 Weight	11.220 kg

### Contractual warranty

Warranty 12 months

# Product datasheet

Specifications



## Bending Spring – heavy gauge – for 25 mm conduit SPH25

EAN Code: 5061089314070

### Main

Product or component type	Bending spring
Product specific application	Heavy duty
Quantity per set	Set of 1

### Complementary

Product destination	diameter: 25 mm conduit
---------------------	-------------------------

Material Steel

### Packing Units

Unit Type of Package 1	PCE
Number of Units in Package 1	1
Package 1 Height	3.000 cm
Package 1 Width	3.000 cm
Package 1 Length	58.000 cm
Package 1 Weight	600.000 g
Unit Type of Package 2	CAR
Number of Units in Package 2	25
Package 2 Height	10.000 cm
Package 2 Width	14.000 cm
Package 2 Length	64.000 cm
Package 2 Weight	15.000 kg

### Contractual warranty

Warranty 12 months

# Product datasheet

Specifications



## Bending Spring – heavy gauge – for 20 mm conduit SPH20

EAN Code: 5061089314063

### Main

Product or component type	Bending spring
Product specific application	Heavy duty
Quantity per set	Set of 1

### Complementary

Product destination	diameter: 20 mm conduit
---------------------	-------------------------

Material Steel

### Packing Units

Unit Type of Package 1	PCE
Number of Units in Package 1	1
Package 1 Height	3.000 cm
Package 1 Width	3.000 cm
Package 1 Length	58.000 cm
Package 1 Weight	351.000 g
Unit Type of Package 2	CAR
Number of Units in Package 2	50
Package 2 Height	10.000 cm
Package 2 Width	14.000 cm
Package 2 Length	64.000 cm
Package 2 Weight	25.000 kg

### Contractual warranty

Warranty 12 months

# Product datasheet

Specifications



## Spacer bar saddle – for 32 mm conduit – white SBS32W

EAN Code: 5061089313974

### Main

Product or component type	Conduit saddle, spacer bar and 2 x screws
Colour tint	White
Quantity per set	Set of 50

### Complementary

Product destination	diameter: 32 mm conduit
fixing mode	Screw fit
Material	UPVC (unplasticized polyvinyl chloride)

### Environment

Standards	BS 4607-5
-----------	-----------

### Packing Units

Unit Type of Package 1	PCE
Number of Units in Package 1	1
Package 1 Height	4.580 cm
Package 1 Width	4.580 cm
Package 1 Length	4.580 cm
Package 1 Weight	15.4000 g
Unit Type of Package 2	CAR
Number of Units in Package 2	50
Package 2 Height	11.000 cm
Package 2 Width	19.000 cm
Package 2 Length	23.000 cm
Package 2 Weight	768.000 g

### Contractual warranty

Warranty	12 months
----------	-----------

# Product datasheet

Specifications



## Spacer bar saddle – for 32 mm conduit - black

EAN Code: 5061089313967

### Main

Product or component type	Conduit saddle, spacer bar and 2 x screws
Colour tint	Black
Quantity per set	Set of 50

### Complementary

Product destination	diameter: 32 mm conduit
fixing mode	Screw fit
Material	UPVC (unplasticized polyvinyl chloride)

### Environment

Standards	BS 4607-5
-----------	-----------

### Packing Units

Unit Type of Package 1	PCE
Number of Units in Package 1	1
Package 1 Height	4.580 cm
Package 1 Width	4.580 cm
Package 1 Length	4.580 cm
Package 1 Weight	15.4000 g
Unit Type of Package 2	CAR
Number of Units in Package 2	50
Package 2 Height	11.000 cm
Package 2 Width	19.000 cm
Package 2 Length	23.000 cm
Package 2 Weight	768.000 g

### Contractual warranty

Warranty	12 months
----------	-----------

# Product datasheet

Specifications



## Spacer bar saddle - for 25 mm conduit - white SBS25W

EAN Code: 5061089313950

### Main

Product or component type	Conduit saddle
Colour tint	White
Quantity per set	Set of 100

### Complementary

Device composition	2 screws spacer bar
Product destination	diameter: 25 mm conduit
Material	UPVC (unplasticized polyvinyl chloride)

### Environment

Standards	BS 4607-5
-----------	-----------

### Packing Units

Unit Type of Package 1	PCE
Number of Units in Package 1	1
Package 1 Height	3.630 cm
Package 1 Width	3.630 cm
Package 1 Length	3.630 cm
Package 1 Weight	11.800 g
Unit Type of Package 2	CAR
Number of Units in Package 2	100
Package 2 Height	11.000 cm
Package 2 Width	19.000 cm
Package 2 Length	23.000 cm
Package 2 Weight	1.189 kg

### Contractual warranty

Warranty	12 months
----------	-----------

# Product datasheet

Specifications



## Spacer bar saddle - for 25 mm conduit - black SBS25B

EAN Code: 5061089313943

### Main

Product or component type	Conduit saddle
Colour tint	Black
Quantity per set	Set of 100

### Complementary

Device composition	2 screws spacer bar
Product destination	diameter: 25 mm conduit
Material	UPVC (unplasticized polyvinyl chloride)

### Environment

Standards	BS 4607-5
-----------	-----------

### Packing Units

Unit Type of Package 1	PCE
Number of Units in Package 1	1
Package 1 Height	3.630 cm
Package 1 Width	3.630 cm
Package 1 Length	3.630 cm
Package 1 Weight	11.800 g
Unit Type of Package 2	CAR
Number of Units in Package 2	100
Package 2 Height	11.000 cm
Package 2 Width	19.000 cm
Package 2 Length	23.000 cm
Package 2 Weight	1.189 kg

### Contractual warranty

Warranty	12 months
----------	-----------

# Product datasheet

Specifications



## Spacer bar saddle - for 20 mm conduit - white SBS20W

EAN Code: 5061089313936

### Main

Product or component type	Conduit saddle
Colour tint	White
Quantity per set	Set of 100

### Complementary

Device composition	2 screws spacer bar
Product destination	diameter: 20 mm conduit
Material	UPVC (unplasticized polyvinyl chloride)

### Environment

Standards	BS 4607-5
-----------	-----------

### Packing Units

Unit Type of Package 1	PCE
Number of Units in Package 1	1
Package 1 Height	2.600 cm
Package 1 Width	1.600 cm
Package 1 Length	5.400 cm
Package 1 Weight	6.800 g
Unit Type of Package 2	CAR
Number of Units in Package 2	100
Package 2 Height	10.800 cm
Package 2 Width	19.400 cm
Package 2 Length	22.000 cm
Package 2 Weight	774.000 g

### Contractual warranty

Warranty	12 months
----------	-----------

# Product datasheet

Specifications



## Spacer bar saddle - for 20 mm conduit - black SBS20B

EAN Code: 5061089313929

### Main

Product or component type	Conduit saddle
Colour tint	Black
Quantity per set	Set of 100

### Complementary

Device composition	2 screws spacer bar
Product destination	diameter: 20 mm conduit
Material	UPVC (unplasticized polyvinyl chloride)

### Environment

Standards	BS 4607-5
-----------	-----------

### Packing Units

Unit Type of Package 1	PCE
Number of Units in Package 1	1
Package 1 Height	2.600 cm
Package 1 Width	1.600 cm
Package 1 Length	5.400 cm
Package 1 Weight	6.800 g
Unit Type of Package 2	CAR
Number of Units in Package 2	100
Package 2 Height	10.800 cm
Package 2 Width	19.400 cm
Package 2 Length	22.000 cm
Package 2 Weight	774.000 g

### Contractual warranty

Warranty	12 months
----------	-----------

# Product datasheet

Specifications



## Rigid round heavy duty 25mm conduit white RNG25W

EAN Code: 5061089310515

### Main

Product or component type	Rigid conduit
Product specific application	Heavy duty
Colour tint	White
Quantity per set	Set of 30 x 3m length

### Complementary

Shape	Round
Material	UPVC (unplasticized polyvinyl chloride)
Outer dimension	25 mm
Length	3 m

### Environment

Standards	BS 6099 BS 4607
-----------	--------------------

### Packing Units

Unit Type of Package 1	PCE
Number of Units in Package 1	3
Package 1 Height	2.500 cm
Package 1 Width	2.500 cm
Package 1 Length	300.000 cm
Package 1 Weight	570.000 g
Unit Type of Package 2	BUNDLE
Number of Units in Package 2	90M
Package 2 Height	14.5000 cm
Package 2 Width	17.500 cm
Package 2 Length	300.000 cm
Package 2 Weight	17.120 kg

### Contractual warranty

Warranty	12 months
----------	-----------

# Product datasheet

Specifications



## Rigid round heavy duty 25mm conduit black RNG25B

EAN Code: 5061089310508

### Main

Product or component type	Rigid conduit
Product specific application	Heavy duty
Colour tint	Black
Quantity per set	Set of 30 x 3m length

### Complementary

Shape	Round
Material	UPVC (unplasticized polyvinyl chloride)
Outer dimension	25 mm
Length	3 m

### Environment

Standards	BS 6099 BS 4607
-----------	--------------------

### Packing Units

Unit Type of Package 1	PCE
Number of Units in Package 1	3
Package 1 Height	2.500 cm
Package 1 Width	2.500 cm
Package 1 Length	300.000 cm
Package 1 Weight	570.000 g
Unit Type of Package 2	BUNDLE
Number of Units in Package 2	90M
Package 2 Height	14.5000 cm
Package 2 Width	17.500 cm
Package 2 Length	300.000 cm
Package 2 Weight	17.120 kg

### Contractual warranty

Warranty	12 months
----------	-----------

# Product datasheet

Specifications



## Rigid round heavy duty 20mm conduit white RNG20W

EAN Code: 5061089310492

### Main

Product or component type	Rigid conduit
Product specific application	Heavy duty
Colour tint	White
Quantity per set	Set of 30 x 3m length

### Complementary

Shape	Round
Material	UPVC (unplasticized polyvinyl chloride)
Outer dimension	20 mm
Length	3 m

### Environment

Standards	BS 6099 BS 4607
-----------	--------------------

### Packing Units

Unit Type of Package 1	PCE
Number of Units in Package 1	3
Package 1 Height	2.000 cm
Package 1 Width	2.000 cm
Package 1 Length	300.000 cm
Package 1 Weight	417.000 g
Unit Type of Package 2	BUNDLE
Number of Units in Package 2	90M
Package 2 Height	12.000 cm
Package 2 Width	14.000 cm
Package 2 Length	300.000 cm
Package 2 Weight	12.520 kg

### Contractual warranty

Warranty	12 months
----------	-----------

# Product datasheet

Specifications

## Rigid round heavy duty 20mm conduit black RNG20B



EAN Code: 5061089310485

### Main

Product or component type	Rigid conduit
Product specific application	Heavy duty
Colour tint	Black
Quantity per set	Set of 30 x 3m length

### Complementary

Shape	Round
Material	UPVC (unplasticized polyvinyl chloride)
Outer dimension	20 mm
Length	3 m

### Environment

Standards	BS 6099 BS 4607
-----------	--------------------

### Packing Units

Unit Type of Package 1	PCE
Number of Units in Package 1	3
Package 1 Height	2.000 cm
Package 1 Width	2.000 cm
Package 1 Length	300.000 cm
Package 1 Weight	417.000 g
Unit Type of Package 2	BUNDLE
Number of Units in Package 2	90M
Package 2 Height	12.000 cm
Package 2 Width	14.000 cm
Package 2 Length	300.000 cm
Package 2 Weight	12.520 kg

### Contractual warranty

Warranty	12 months
----------	-----------

# Product datasheet

Specifications



## Reducer – 32 to 25 mm conduit - white RED32W

EAN Code: 5061089316135

### Main

Product or component type	Reducer
Colour tint	White
Quantity per set	Set of 50

### Complementary

Product destination	diameter: 32 mm conduit to diameter 25 mm conduit
fixing mode	Push-fit
Material	UPVC (unplasticized polyvinyl chloride)

### Environment

Standards	BS 4607-5
-----------	-----------

### Packing Units

Unit Type of Package 1	PCE
Number of Units in Package 1	1
Package 1 Height	4.580 cm
Package 1 Width	4.570 cm
Package 1 Length	4.580 cm
Package 1 Weight	19.0000 g
Unit Type of Package 2	CAR
Number of Units in Package 2	50
Package 2 Height	11.000 cm
Package 2 Width	19.000 cm
Package 2 Length	23.000 cm
Package 2 Weight	950.000 g

### Contractual warranty

Warranty	12 months
----------	-----------

# Product datasheet

Specifications



## Reducer – 32 to 25 mm conduit - black RED32B

EAN Code: 5061089315800

### Main

Product or component type	Reducer
Colour tint	Black
Quantity per set	Set of 50

### Complementary

Product destination	diameter: 32 mm conduit to diameter 25 mm conduit
fixing mode	Push-fit
Material	UPVC (unplasticized polyvinyl chloride)

### Environment

Standards	BS 4607-5
-----------	-----------

### Packing Units

Unit Type of Package 1	PCE
Number of Units in Package 1	1
Package 1 Height	4.580 cm
Package 1 Width	4.570 cm
Package 1 Length	4.580 cm
Package 1 Weight	19.0000 g
Unit Type of Package 2	CAR
Number of Units in Package 2	50
Package 2 Height	11.000 cm
Package 2 Width	19.000 cm
Package 2 Length	23.000 cm
Package 2 Weight	950.000 g

### Contractual warranty

Warranty	12 months
----------	-----------

# Product datasheet

Specifications

## Reducer – 25 to 20 mm conduit - white RED25W



EAN Code: 5061089315794

### Main

Product or component type	Reducer
Colour tint	White
Quantity per set	Set of 100

### Complementary

Product destination	diameter: 25 mm conduit to diameter 20 mm conduit
fixing mode	Push-fit
Material	UPVC (unplasticized polyvinyl chloride)

### Environment

Standards	BS 4607-5
-----------	-----------

### Packing Units

Unit Type of Package 1	PCE
Number of Units in Package 1	1
Package 1 Height	3.630 cm
Package 1 Width	3.630 cm
Package 1 Length	3.630 cm
Package 1 Weight	7.9000 g
Unit Type of Package 2	CAR
Number of Units in Package 2	100
Package 2 Height	11.000 cm
Package 2 Width	19.000 cm
Package 2 Length	23.000 cm
Package 2 Weight	788.000 g

### Contractual warranty

Warranty	12 months
----------	-----------

# Product datasheet

Specifications



## Reducer – 25 to 20 mm conduit - black RED25B

EAN Code: 5061089315787

### Main

Product or component type	Reducer
Colour tint	Black
Quantity per set	Set of 100

### Complementary

Product destination	diameter: 25 mm conduit to diameter 20 mm conduit
fixing mode	Push-fit
Material	UPVC (unplasticized polyvinyl chloride)

### Environment

Standards	BS 4607-5
-----------	-----------

### Packing Units

Unit Type of Package 1	PCE
Number of Units in Package 1	1
Package 1 Height	3.630 cm
Package 1 Width	3.630 cm
Package 1 Length	3.630 cm
Package 1 Weight	7.9000 g
Unit Type of Package 2	CAR
Number of Units in Package 2	100
Package 2 Height	11.000 cm
Package 2 Width	19.000 cm
Package 2 Length	23.000 cm
Package 2 Weight	788.000 g

### Contractual warranty

Warranty 12 months

# Product datasheet

Specifications

## Strap saddle – for 25 mm conduit - white PSS25W



EAN Code: 5061089313899

### Main

Product or component type	Conduit strap saddle
Colour tint	White
Quantity per set	Set of 100

### Complementary

Product destination	diameter: 25 mm conduit
fixing mode	By screw
Material	UPVC (unplasticized polyvinyl chloride)

### Environment

Standards	BS 4607-5
-----------	-----------

### Packing Units

Unit Type of Package 1	PCE
Number of Units in Package 1	1
Package 1 Height	3.630 cm
Package 1 Width	3.630 cm
Package 1 Length	3.630 cm
Package 1 Weight	5.7000 g
Unit Type of Package 2	CAR
Number of Units in Package 2	100
Package 2 Height	11.000 cm
Package 2 Width	19.000 cm
Package 2 Length	23.000 cm
Package 2 Weight	571.000 g

### Contractual warranty

Warranty	12 months
----------	-----------

# Product datasheet

Specifications

## Strap saddle – for 25 mm conduit - black PSS25B



EAN Code: 5061089313882

### Main

Product or component type	Conduit strap saddle
Colour tint	Black
Quantity per set	Set of 100

### Complementary

Product destination	diameter: 25 mm conduit
fixing mode	By screw
Material	UPVC (unplasticized polyvinyl chloride)

### Environment

Standards	BS 4607-5
-----------	-----------

### Packing Units

Unit Type of Package 1	PCE
Number of Units in Package 1	1
Package 1 Height	3.630 cm
Package 1 Width	3.630 cm
Package 1 Length	3.630 cm
Package 1 Weight	5.7000 g
Unit Type of Package 2	CAR
Number of Units in Package 2	100
Package 2 Height	11.000 cm
Package 2 Width	19.000 cm
Package 2 Length	23.000 cm
Package 2 Weight	571.000 g

### Contractual warranty

Warranty 12 months

# Product datasheet

Specifications

## Strap saddle – for 20 mm conduit - white PSS20W



EAN Code: 5061089313875

### Main

Product or component type	Conduit strap saddle
Colour tint	White
Quantity per set	Set of 100

### Complementary

Product destination	diameter: 20 mm conduit
fixing mode	By screw
Material	UPVC (unplasticized polyvinyl chloride)

### Environment

Standards	BS 4607-5
-----------	-----------

### Packing Units

Unit Type of Package 1	PCE
Number of Units in Package 1	1
Package 1 Height	2.520 cm
Package 1 Width	2.520 cm
Package 1 Length	2.520 cm
Package 1 Weight	3.0000 g
Unit Type of Package 2	CAR
Number of Units in Package 2	100
Package 2 Height	8.000 cm
Package 2 Width	13.000 cm
Package 2 Length	15.500 cm
Package 2 Weight	288.000 g

### Contractual warranty

Warranty	12 months
----------	-----------

# Product datasheet

Specifications

## Strap saddle – for 20 mm conduit - black PSS20B



EAN Code: 5061089313868

### Main

Product or component type	Conduit strap saddle
Colour tint	Black
Quantity per set	Set of 100

### Complementary

Product destination	diameter: 20 mm conduit
fixing mode	By screw
Material	UPVC (unplasticized polyvinyl chloride)

### Environment

Standards	BS 4607-5
-----------	-----------

### Packing Units

Unit Type of Package 1	PCE
Number of Units in Package 1	1
Package 1 Height	2.520 cm
Package 1 Width	2.520 cm
Package 1 Length	2.520 cm
Package 1 Weight	3.0000 g
Unit Type of Package 2	CAR
Number of Units in Package 2	100
Package 2 Height	8.000 cm
Package 2 Width	13.000 cm
Package 2 Length	15.500 cm
Package 2 Weight	288.000 g

### Contractual warranty

Warranty 12 months

# Product datasheet

Specifications



## Standard coupling – for 32mm conduit - white PSC32W

EAN Code: 5061089313851

### Main

Product or component type	Standard coupling
Colour tint	White
Quantity per set	Set of 50

### Complementary

Product destination	diameter: 32 mm conduit
fixing mode	Push-fit
Material	UPVC (unplasticized polyvinyl chloride)

### Environment

Standards	BS 4607-5
-----------	-----------

### Packing Units

Unit Type of Package 1	PCE
Number of Units in Package 1	1
Package 1 Height	5.370 cm
Package 1 Width	5.370 cm
Package 1 Length	5.370 cm
Package 1 Weight	25.3000 g
Unit Type of Package 2	CAR
Number of Units in Package 2	50
Package 2 Height	18.000 cm
Package 2 Width	18.000 cm
Package 2 Length	24.000 cm
Package 2 Weight	1.263 kg

### Contractual warranty

Warranty	12 months
----------	-----------

# Product datasheet

Specifications



Standard coupling – for 32mm conduit -  
black  
PSC32B

EAN Code: 5061089313844

## Main

Product or component type	Standard coupling
Colour tint	Black
Quantity per set	Set of 50

## Complementary

Product destination	diameter: 32 mm conduit
fixing mode	Push-fit
Material	UPVC (unplasticized polyvinyl chloride)

## Environment

Standards	BS 4607-5
-----------	-----------

## Packing Units

Unit Type of Package 1	PCE
Number of Units in Package 1	1
Package 1 Height	5.370 cm
Package 1 Width	5.370 cm
Package 1 Length	5.370 cm
Package 1 Weight	25.3000 g
Unit Type of Package 2	CAR
Number of Units in Package 2	50
Package 2 Height	18.000 cm
Package 2 Width	18.000 cm
Package 2 Length	24.000 cm
Package 2 Weight	1.263 kg

## Contractual warranty

Warranty 12 months

# Product datasheet

Specifications



## Standard 25mm conduit coupling - white PSC25W

EAN Code: 5061089313837

### Main

Product or component type	Standard coupling
Colour tint	White
Quantity per set	Set of 50

### Complementary

Product destination	diameter: 25 mm conduit
Material	UPVC (unplasticized polyvinyl chloride)

### Environment

Standards	BS 4607-5
-----------	-----------

### Packing Units

Unit Type of Package 1	PCE
Number of Units in Package 1	1
Package 1 Height	3.000 cm
Package 1 Width	3.000 cm
Package 1 Length	5.500 cm
Package 1 Weight	17.000 g
Unit Type of Package 2	CAR
Number of Units in Package 2	50
Package 2 Height	10.500 cm
Package 2 Width	19.000 cm
Package 2 Length	22.000 cm
Package 2 Weight	920.000 g

### Contractual warranty

Warranty	12 months
----------	-----------

# Product datasheet

Specifications



## Standard 25mm conduit coupling - black PSC25B

EAN Code: 3606480493584

### Main

Product or component type	Standard coupling
Colour tint	Black
Quantity per set	Set of 50

### Complementary

Product destination	diameter: 25 mm conduit
Material	UPVC (unplasticized polyvinyl chloride)

### Environment

Standards	BS 4607-5
-----------	-----------

### Packing Units

Unit Type of Package 1	PCE
Number of Units in Package 1	1
Package 1 Height	3.000 cm
Package 1 Width	3.000 cm
Package 1 Length	5.300 cm
Package 1 Weight	16.000 g
Unit Type of Package 2	CAR
Number of Units in Package 2	50
Package 2 Height	10.700 cm
Package 2 Width	19.000 cm
Package 2 Length	22.000 cm
Package 2 Weight	907.000 g

### Contractual warranty

Warranty	12 months
----------	-----------

# Product datasheet

Specifications



## Standard 20mm conduit coupling - black PSC20B

EAN Code: 5061089313806

### Main

Product or component type	Standard coupling
Colour tint	Black
Quantity per set	Set of 100

### Complementary

Product destination	diameter: 20 mm conduit
Material	UPVC (unplasticized polyvinyl chloride)

### Environment

Standards	BS 4607-5
-----------	-----------

### Packing Units

Unit Type of Package 1	PCE
Number of Units in Package 1	1
Package 1 Height	3.630 cm
Package 1 Width	3.630 cm
Package 1 Length	3.630 cm
Package 1 Weight	9.000 g
Unit Type of Package 2	CAR
Number of Units in Package 2	100
Package 2 Height	11.000 cm
Package 2 Width	19.000 cm
Package 2 Length	23.000 cm
Package 2 Weight	903.000 g

### Contractual warranty

Warranty	12 months
----------	-----------

# Product datasheet

Specifications



## Male adaptor – for 32mm conduit - black PMA32B

EAN Code: 5061089313783

### Main

Product or component type	Adaptor complete with locking
Colour tint	Black
Quantity per set	Set of 50

### Complementary

Product destination	diameter: 32 mm conduit
fixing mode	Push-fit
Material	UPVC (unplasticized polyvinyl chloride)

### Environment

Standards	BS 4607-5
-----------	-----------

### Packing Units

Unit Type of Package 1	PCE
Number of Units in Package 1	1
Package 1 Height	5.370 cm
Package 1 Width	5.370 cm
Package 1 Length	5.370 cm
Package 1 Weight	17.8000 g
Unit Type of Package 2	CAR
Number of Units in Package 2	50
Package 2 Height	18.000 cm
Package 2 Width	18.000 cm
Package 2 Length	24.000 cm
Package 2 Weight	892.000 g

### Contractual warranty

Warranty 12 months

# Product datasheet

Specifications



## Male adaptor - for 25 mm conduit - white PMA25W

EAN Code: 5061089313776

### Main

Product or component type	Adaptor
Provided equipment	Lockring
Colour tint	White
Quantity per set	Set of 50

### Complementary

Connector type	Male
Product destination	diameter: 25 mm conduit
Material	UPVC (unplasticized polyvinyl chloride)

### Environment

Standards	BS 4607-5
-----------	-----------

### Packing Units

Unit Type of Package 1	PCE
Number of Units in Package 1	1
Package 1 Height	2.900 cm
Package 1 Width	3.200 cm
Package 1 Length	4.000 cm
Package 1 Weight	11.000 g
Unit Type of Package 2	CAR
Number of Units in Package 2	50
Package 2 Height	11.000 cm
Package 2 Width	19.200 cm
Package 2 Length	22.000 cm
Package 2 Weight	640.000 g

### Contractual warranty

Warranty	12 months
----------	-----------

# Product datasheet

Specifications



## Male adaptor - for 25 mm conduit - black PMA25B

EAN Code: 5061089313769

### Main

Product or component type	Adaptor
Provided equipment	Lockring
Colour tint	Black
Quantity per set	Set of 50

### Complementary

Connector type	Male
Product destination	diameter: 25 mm conduit
Material	UPVC (unplasticized polyvinyl chloride)

### Environment

Standards	BS 4607-5
-----------	-----------

### Packing Units

Unit Type of Package 1	PCE
Number of Units in Package 1	1
Package 1 Height	2.900 cm
Package 1 Width	3.200 cm
Package 1 Length	4.000 cm
Package 1 Weight	11.000 g
Unit Type of Package 2	BB1
Number of Units in Package 2	50
Package 2 Height	11.000 cm
Package 2 Width	23.000 cm
Package 2 Length	19.000 cm
Package 2 Weight	662.000 g

### Contractual warranty

Warranty	12 months
----------	-----------

# Product datasheet

Specifications



## Male adaptor - for 20 mm conduit - white PMA20W

EAN Code: 5061089313752

### Main

Product or component type	Adaptor
Provided equipment	Lockring
Colour tint	White
Quantity per set	Set of 100

### Complementary

Connector type	Male
Product destination	diameter: 20 mm conduit
Material	UPVC (unplasticized polyvinyl chloride)

### Environment

Standards	BS 4607-5
-----------	-----------

### Packing Units

Unit Type of Package 1	PCE
Number of Units in Package 1	1
Package 1 Height	2.400 cm
Package 1 Width	2.700 cm
Package 1 Length	3.400 cm
Package 1 Weight	7.000 g
Unit Type of Package 2	CAR
Number of Units in Package 2	100
Package 2 Height	10.900 cm
Package 2 Width	19.200 cm
Package 2 Length	22.000 cm
Package 2 Weight	810.000 g

### Contractual warranty

Warranty	12 months
----------	-----------

# Product datasheet

Specifications



## male adaptor - for 20 mm conduit - black PMA20B

EAN Code: 5061089313745

### Main

Product or component type	Adaptor
Provided equipment	Lockring
Colour tint	Black
Quantity per set	Set of 100

### Complementary

Connector type	Male
Product destination	diameter: 20 mm conduit
Material	UPVC (unplasticized polyvinyl chloride)

### Environment

Standards	BS 4607-5
-----------	-----------

### Packing Units

Unit Type of Package 1	PCE
Number of Units in Package 1	1
Package 1 Height	3.630 cm
Package 1 Width	3.630 cm
Package 1 Length	3.630 cm
Package 1 Weight	8.100 g
Unit Type of Package 2	CAR
Number of Units in Package 2	100
Package 2 Height	11.000 cm
Package 2 Width	19.000 cm
Package 2 Length	23.000 cm
Package 2 Weight	770.000 g

### Contractual warranty

Warranty	12 months
----------	-----------

# Product datasheet

Specifications



## Inspection tee - for 25 mm conduit - white PIT25W

EAN Code: 5061089313738

### Main

Product or component type	Inspection tee
Colour tint	White
Quantity per set	Set of 20

### Complementary

Product destination	diameter: 25 mm conduit
Material	UPVC (unplasticized polyvinyl chloride)

### Environment

Standards	BS 4607-5
-----------	-----------

### Packing Units

Unit Type of Package 1	PCE
Number of Units in Package 1	1
Package 1 Height	7.290 cm
Package 1 Width	7.290 cm
Package 1 Length	7.290 cm
Package 1 Weight	61.300 g
Unit Type of Package 2	CAR
Number of Units in Package 2	20
Package 2 Height	18.000 cm
Package 2 Width	18.000 cm
Package 2 Length	24.000 cm
Package 2 Weight	1.226 kg

### Contractual warranty

Warranty	12 months
----------	-----------

# Product datasheet

Specifications



## Inspection tees - for 25 mm conduit - black PIT25B

EAN Code: 5061089313721

### Main

Product or component type	Inspection tee
Colour tint	Black
Quantity per set	Set of 20

### Complementary

Product destination	diameter: 25 mm conduit
Material	UPVC (unplasticized polyvinyl chloride)

### Environment

Standards	BS 4607-5
-----------	-----------

### Packing Units

Unit Type of Package 1	PCE
Number of Units in Package 1	1
Package 1 Height	7.290 cm
Package 1 Width	7.290 cm
Package 1 Length	7.290 cm
Package 1 Weight	61.200 g
Unit Type of Package 2	CAR
Number of Units in Package 2	20
Package 2 Height	18.000 cm
Package 2 Width	18.000 cm
Package 2 Length	24.000 cm
Package 2 Weight	1.223 kg

### Contractual warranty

Warranty	12 months
----------	-----------

# Product datasheet

Specifications



## Inspection tees - for 20 mm conduit - white PIT20W

EAN Code: 3606480493157

### Main

Product or component type	Inspection tee
Colour tint	White
Quantity per set	Set of 20

### Complementary

Product destination	diameter: 20 mm conduit
Material	UPVC (unplasticized polyvinyl chloride)

### Environment

Standards	BS 4607-5
-----------	-----------

### Packing Units

Unit Type of Package 1	PCE
Number of Units in Package 1	1
Package 1 Height	6.210 cm
Package 1 Width	6.210 cm
Package 1 Length	6.210 cm
Package 1 Weight	38.800 g
Unit Type of Package 2	CAR
Number of Units in Package 2	20
Package 2 Height	11.000 cm
Package 2 Width	19.000 cm
Package 2 Length	23.000 cm
Package 2 Weight	775.000 g

### Contractual warranty

Warranty	12 months
----------	-----------

# Product datasheet

Specifications



## Inspection tees - for 20 mm conduit - black PIT20B

EAN Code: 5061089313707

### Main

Product or component type	Inspection tee
Colour tint	Black
Quantity per set	Set of 20

### Complementary

Product destination	diameter: 20 mm conduit
Material	UPVC (unplasticized polyvinyl chloride)

### Environment

Standards	BS 4607-5
-----------	-----------

### Packing Units

Unit Type of Package 1	PCE
Number of Units in Package 1	1
Package 1 Height	6.210 cm
Package 1 Width	6.210 cm
Package 1 Length	6.210 cm
Package 1 Weight	38.800 g
Unit Type of Package 2	CAR
Number of Units in Package 2	20
Package 2 Height	11.000 cm
Package 2 Width	19.000 cm
Package 2 Length	23.000 cm
Package 2 Weight	775.000 g

### Contractual warranty

Warranty	12 months
----------	-----------

# Product datasheet

Specifications



## Inspection elbow - for 20 mm conduit - white PIE20W

EAN Code: 5061089313677

### Main

Product or component type	Inspection elbow
Colour tint	White
Quantity per set	Set of 50

### Complementary

Product destination	diameter: 20 mm conduit
Material	UPVC (unplasticized polyvinyl chloride)

### Environment

Standards	BS 4607-5
-----------	-----------

### Packing Units

Unit Type of Package 1	PCE
Number of Units in Package 1	1
Package 1 Height	2.800 cm
Package 1 Width	6.000 cm
Package 1 Length	6.000 cm
Package 1 Weight	23.000 g
Unit Type of Package 2	CAR
Number of Units in Package 2	50
Package 2 Height	18.000 cm
Package 2 Width	18.000 cm
Package 2 Length	23.000 cm
Package 2 Weight	1.257 kg

### Contractual warranty

Warranty	12 months
----------	-----------

# Product datasheet

Specifications



## Inspection elbow - for 20 mm conduit -black PIE20B

EAN Code: 3606480493126

### Main

Product or component type	Inspection elbow
Colour tint	Black
Quantity per set	Set of 50

### Complementary

Product destination	diameter: 20 mm conduit
Material	UPVC (unplasticized polyvinyl chloride)

### Environment

Standards	BS 4607-5
-----------	-----------

### Packing Units

Unit Type of Package 1	PCE
Number of Units in Package 1	1
Package 1 Height	3.000 cm
Package 1 Width	6.000 cm
Package 1 Length	6.000 cm
Package 1 Weight	22.000 g
Unit Type of Package 2	CAR
Number of Units in Package 2	50
Package 2 Height	18.200 cm
Package 2 Width	23.700 cm
Package 2 Length	18.400 cm
Package 2 Weight	1.210 kg

### Contractual warranty

Warranty	12 months
----------	-----------

# Product datasheet

Specifications



## Inspection bend - for 25 mm conduit - white PIB25W

EAN Code: 5061089313653

### Main

Product or component type	Inspection bend
Colour tint	White
Quantity per set	Set of 20

### Complementary

Product destination	diameter: 25 mm conduit
Material	UPVC (unplasticized polyvinyl chloride)

### Environment

Standards	BS 4607-5
-----------	-----------

### Packing Units

Unit Type of Package 1	PCE
Number of Units in Package 1	1
Package 1 Height	7.290 cm
Package 1 Width	7.290 cm
Package 1 Length	7.290 cm
Package 1 Weight	64.400 g
Unit Type of Package 2	CAR
Number of Units in Package 2	20
Package 2 Height	18.000 cm
Package 2 Width	18.000 cm
Package 2 Length	24.000 cm
Package 2 Weight	1.288 kg

### Contractual warranty

Warranty	12 months
----------	-----------

# Product datasheet

Specifications



## Inspection bend - for 25 mm conduit - black PIB25B

EAN Code: 5061089313646

### Main

Product or component type	Inspection bend
Colour tint	Black
Quantity per set	Set of 20

### Complementary

Product destination	diameter: 25 mm conduit
Material	UPVC (unplasticized polyvinyl chloride)

### Environment

Standards	BS 4607-5
-----------	-----------

### Packing Units

Unit Type of Package 1	PCE
Number of Units in Package 1	1
Package 1 Height	7.290 cm
Package 1 Width	7.290 cm
Package 1 Length	7.290 cm
Package 1 Weight	64.400 g
Unit Type of Package 2	CAR
Number of Units in Package 2	20
Package 2 Height	18.000 cm
Package 2 Width	18.000 cm
Package 2 Length	24.000 cm
Package 2 Weight	1.288 kg

### Contractual warranty

Warranty	12 months
----------	-----------

# Product datasheet

Specifications



## Inspection bend - for 20 mm conduit - white PIB20W

EAN Code: 5061089313646

### Main

Product or component type	Inspection bend
Colour tint	White
Quantity per set	Set of 25

### Complementary

Product destination	diameter: 20 mm conduit
Material	UPVC (unplasticized polyvinyl chloride)

### Environment

Standards	BS 4607-5
-----------	-----------

### Packing Units

Unit Type of Package 1	PCE
Number of Units in Package 1	1
Package 1 Height	6.770 cm
Package 1 Width	6.770 cm
Package 1 Length	6.770 cm
Package 1 Weight	37.000 g
Unit Type of Package 2	CAR
Number of Units in Package 2	25
Package 2 Height	18.000 cm
Package 2 Width	18.000 cm
Package 2 Length	24.000 cm
Package 2 Weight	921.000 g

### Contractual warranty

Warranty	12 months
----------	-----------

# Product datasheet

Specifications



## Inspection bend - for 20 mm conduit - black PIB20B

EAN Code: 5061089313639

### Main

Product or component type	Inspection bend
Colour tint	Black
Quantity per set	Set of 25

### Complementary

Product destination	diameter: 20 mm conduit
Material	UPVC (unplasticized polyvinyl chloride)

### Environment

Standards	BS 4607-5
-----------	-----------

### Packing Units

Unit Type of Package 1	PCE
Number of Units in Package 1	1
Package 1 Height	6.770 cm
Package 1 Width	6.770 cm
Package 1 Length	6.770 cm
Package 1 Weight	37.000 g
Unit Type of Package 2	CAR
Number of Units in Package 2	25
Package 2 Height	18.000 cm
Package 2 Width	18.000 cm
Package 2 Length	24.000 cm
Package 2 Weight	921.000 g

### Contractual warranty

Warranty	12 months
----------	-----------

# Product datasheet

Specifications



## Female adaptor - for 25 mm conduit - white PFA25W

EAN Code: 3606480493058

Discontinued

### Main

Range of product	Mita
Product or component type	Adaptor
Provided equipment	Male bush
Colour tint	White
Quantity per set	Set of 50

### Complementary

Connector type	Female
Product destination	diameter: 25 mm conduit
Material	UPVC (unplasticized polyvinyl chloride)

### Environment

Standards	BS 4607-5
-----------	-----------

### Packing Units

Unit Type of Package 1	PCE
Number of Units in Package 1	1
Package 1 Height	3.000 cm
Package 1 Width	3.000 cm
Package 1 Length	4.000 cm
Package 1 Weight	12.000 g
Unit Type of Package 2	CAR
Number of Units in Package 2	50
Package 2 Height	10.800 cm
Package 2 Width	19.000 cm
Package 2 Length	22.000 cm
Package 2 Weight	703.000 g

### Contractual warranty

Warranty	12 months
----------	-----------

# Product datasheet

Specifications



## Female adaptor - for 25 mm conduit - black PFA25B

\_\_\_\_\_  
EAN Code: 5061089313585  
\_\_\_\_\_

### Main

Product or component type	Adaptor
Provided equipment	Male bush
Colour tint	Black
Quantity per set	Set of 50

### Complementary

Connector type	Female
Product destination	diameter: 25 mm conduit
Material	UPVC (unplasticized polyvinyl chloride)

### Environment

Standards	BS 4607-5
-----------	-----------

### Packing Units

Unit Type of Package 1	PCE
Number of Units in Package 1	1
Package 1 Height	3.000 cm
Package 1 Width	3.000 cm
Package 1 Length	4.500 cm
Package 1 Weight	11.900 g
Unit Type of Package 2	CAR
Number of Units in Package 2	50
Package 2 Height	11.000 cm
Package 2 Width	19.300 cm
Package 2 Length	22.300 cm
Package 2 Weight	682.000 g

### Contractual warranty

Warranty	12 months
----------	-----------

# Product datasheet

Specifications



## Female adaptor - for 20 mm conduit - white PFA20W

EAN Code: 5061089313578

### Main

Product or component type	Adaptor
Provided equipment	Male bush
Colour tint	White
Quantity per set	Set of 100

### Complementary

Connector type	Female
Product destination	diameter: 20 mm conduit
Material	UPVC (unplasticized polyvinyl chloride)

### Environment

Standards	BS 4607-5
-----------	-----------

### Packing Units

Unit Type of Package 1	PCE
Number of Units in Package 1	1
Package 1 Height	2.500 cm
Package 1 Width	2.500 cm
Package 1 Length	4.000 cm
Package 1 Weight	8.000 g
Unit Type of Package 2	CAR
Number of Units in Package 2	100
Package 2 Height	10.800 cm
Package 2 Width	19.000 cm
Package 2 Length	22.000 cm
Package 2 Weight	840.000 g

### Contractual warranty

Warranty	12 months
----------	-----------

# Product datasheet

Specifications



## Female adaptor - for 20 mm conduit - black PFA20B

EAN Code: 5061089313561

### Main

Product or component type	Adaptor
Provided equipment	Male bush
Colour tint	Black
Quantity per set	Set of 100

### Complementary

Connector type	Female
Product destination	diameter: 20 mm conduit
Material	UPVC (unplasticized polyvinyl chloride)

### Environment

Standards	BS 4607-5
-----------	-----------

### Packing Units

Unit Type of Package 1	PCE
Number of Units in Package 1	1
Package 1 Height	2.500 cm
Package 1 Width	2.500 cm
Package 1 Length	3.800 cm
Package 1 Weight	8.000 g
Unit Type of Package 2	BB1
Number of Units in Package 2	100
Package 2 Height	11.000 cm
Package 2 Width	22.500 cm
Package 2 Length	19.000 cm
Package 2 Weight	874.900 g

### Contractual warranty

Warranty	12 months
----------	-----------

# Product datasheet

Specifications



## Expansion coupling – for 25mm conduit - white PEC25W

EAN Code: 5061089311512

### Main

Product or component type	Expansion coupling
Colour tint	White
Quantity per set	Set of 50

### Complementary

Product destination	diameter: 25 mm conduit
fixing mode	Push-fit
Material	UPVC (unplasticized polyvinyl chloride)

### Environment

Standards	BS 4607-5
-----------	-----------

### Packing Units

Unit Type of Package 1	PCE
Number of Units in Package 1	1
Package 1 Height	5.370 cm
Package 1 Width	5.370 cm
Package 1 Length	5.370 cm
Package 1 Weight	18.5000 g
Unit Type of Package 2	CAR
Number of Units in Package 2	50
Package 2 Height	18.000 cm
Package 2 Width	18.000 cm
Package 2 Length	24.000 cm
Package 2 Weight	927.000 g

### Contractual warranty

Warranty	12 months
----------	-----------

# Product datasheet

Specifications



Expansion coupling – for 25mm conduit -  
black  
PEC25B

EAN Code: 5061089311505

## Main

Product or component type	Expansion coupling
Colour tint	Black
Quantity per set	Set of 50

## Complementary

Product destination	diameter: 25 mm conduit
fixing mode	Push-fit
Material	UPVC (unplasticized polyvinyl chloride)

## Environment

Standards	BS 4607-5
-----------	-----------

## Packing Units

Unit Type of Package 1	PCE
Number of Units in Package 1	1
Package 1 Height	5.370 cm
Package 1 Width	5.370 cm
Package 1 Length	5.370 cm
Package 1 Weight	18.5000 g
Unit Type of Package 2	CAR
Number of Units in Package 2	50
Package 2 Height	18.000 cm
Package 2 Width	18.000 cm
Package 2 Length	24.000 cm
Package 2 Weight	927.000 g

## Contractual warranty

Warranty 12 months

# Product datasheet

Specifications



## Expansion coupling – for 20mm conduit - white PEC20W

EAN Code: 5061089311499

### Main

Product or component type	Expansion coupling
Colour tint	White
Quantity per set	Set of 50

### Complementary

Product destination	diameter: 20 mm conduit
fixing mode	Push-fit
Material	UPVC (unplasticized polyvinyl chloride)

### Environment

Standards	BS 4607-5
-----------	-----------

### Packing Units

Unit Type of Package 1	PCE
Number of Units in Package 1	1
Package 1 Height	4.580 cm
Package 1 Width	4.580 cm
Package 1 Length	4.580 cm
Package 1 Weight	13.9000 g
Unit Type of Package 2	CAR
Number of Units in Package 2	50
Package 2 Height	11.000 cm
Package 2 Width	19.000 cm
Package 2 Length	23.000 cm
Package 2 Weight	693.000 g

### Contractual warranty

Warranty	12 months
----------	-----------

# Product datasheet

Specifications



Expansion coupling – for 20mm conduit -  
black  
PEC20B

EAN Code: 5061089313354

## Main

Product or component type	Expansion coupling
Colour tint	Black
Quantity per set	Set of 50

## Complementary

Product destination	diameter: 20 mm conduit
fixing mode	Push-fit
Material	UPVC (unplasticized polyvinyl chloride)

## Environment

Standards	BS 4607-5
-----------	-----------

## Packing Units

Unit Type of Package 1	PCE
Number of Units in Package 1	1
Package 1 Height	4.580 cm
Package 1 Width	4.580 cm
Package 1 Length	4.580 cm
Package 1 Weight	13.9000 g
Unit Type of Package 2	CAR
Number of Units in Package 2	50
Package 2 Height	11.000 cm
Package 2 Width	19.000 cm
Package 2 Length	23.000 cm
Package 2 Weight	693.000 g

## Contractual warranty

Warranty 12 months

# Product datasheet

Specifications

## Oval rigid conduit – white - 38 mm OVL38W



EAN Code: 5061089315688

### Main

Product or component type	Rigid Conduit - Oval
Colour tint	White
Quantity per set	Set of 100 m

### Complementary

Dimensions	38 mm x 3 m length
material with surface finish	UPVC (unplasticized polyvinyl chloride)

### Packing Units

Unit Type of Package 1	PCE
Number of Units in Package 1	1
Package 1 Height	1.500 cm
Package 1 Width	3.800 cm
Package 1 Length	300.000 cm
Package 1 Weight	399.9 g
Unit Type of Package 2	POLYBAG
Number of Units in Package 2	25 x 3.000 m
Package 2 Height	12.000 cm
Package 2 Width	17.000 cm
Package 2 Length	3.000 cm
Package 2 Weight	10.000 kg

### Contractual warranty

Warranty	12 months
----------	-----------

Disclaimer: This documentation is not intended as a substitute for and is not to be used for determining suitability or reliability of these products for specific user applications

# Product datasheet

Specifications

## Oval rigid conduit – white - 32 mm OVL32W



EAN Code: 5061089310478

### Main

Product or component type	Rigid Conduit - Oval
Colour tint	White
Quantity per set	Set of 100 m

### Complementary

Dimensions	32 mm x 3 m length
material with surface finish	UPVC (unplasticized polyvinyl chloride)

### Packing Units

Unit Type of Package 1	PCE
Number of Units in Package 1	1
Package 1 Height	1.300 cm
Package 1 Width	3.000 cm
Package 1 Length	300.000 cm
Package 1 Weight	420 g
Unit Type of Package 2	POLYBAG
Number of Units in Package 2	25 x 3.000 m
Package 2 Height	10.500 cm
Package 2 Width	13.000 cm
Package 2 Length	3.000 cm
Package 2 Weight	10.860 kg

### Contractual warranty

Warranty	12 months
----------	-----------

Disclaimer: This documentation is not intended as a substitute for and is not to be used for determining suitability or reliability of these products for specific user applications

# Product datasheet

Specifications

## Oval rigid conduit – white - 25 mm OVL25W



EAN Code: 5061089310461

### Main

Product or component type	Rigid Conduit - Oval
Colour tint	White
Quantity per set	Set of 150 m

### Complementary

Dimensions	25 mm x 3 m length
material with surface finish	UPVC (unplasticized polyvinyl chloride)

### Packing Units

Unit Type of Package 1	PCE
Number of Units in Package 1	1
Package 1 Height	1.000 cm
Package 1 Width	3.000 cm
Package 1 Length	300.000 cm
Package 1 Weight	246 g
Unit Type of Package 2	POLYBAG
Number of Units in Package 2	50 x 3.000 m
Package 2 Height	14.000 cm
Package 2 Width	15.000 cm
Package 2 Length	3.000 cm
Package 2 Weight	12.240 kg

### Contractual warranty

Warranty	12 months
----------	-----------

Disclaimer: This documentation is not intended as a substitute for and is not to be used for determining suitability or reliability of these products for specific user applications

# Product datasheet

Specifications

## Oval rigid conduit – white - 20 mm OVL20W



EAN Code: 5061089310454

### Main

Product or component type	Rigid Conduit - Oval
Colour tint	White
Quantity per set	Set of 150 m

### Complementary

Dimensions	20 mm x 3 m length
material with surface finish	UPVC (unplasticized polyvinyl chloride)

### Packing Units

Unit Type of Package 1	PCE
Number of Units in Package 1	1
Package 1 Height	1.000 cm
Package 1 Width	2.300 cm
Package 1 Length	300.000 cm
Package 1 Weight	201 g
Unit Type of Package 2	POLYBAG
Number of Units in Package 2	50 x 3.000 m
Package 2 Height	14.000 cm
Package 2 Width	17.000 cm
Package 2 Length	3.000 cm
Package 2 Weight	10.140 kg

### Contractual warranty

Warranty	12 months
----------	-----------

Disclaimer: This documentation is not intended as a substitute for and is not to be used for determining suitability or reliability of these products for specific user applications

# Product datasheet

Specifications

## Oval rigid conduit – white - 16 mm OVL16W



EAN Code: 5061089310447

### Main

Product or component type	Rigid Conduit - Oval
Colour tint	White
Quantity per set	Set of 150 m

### Complementary

Dimensions	16 mm x 3 m length
material with surface finish	UPVC (unplasticized polyvinyl chloride)

### Packing Units

Unit Type of Package 1	PCE
Number of Units in Package 1	1
Package 1 Height	1.000 cm
Package 1 Width	1.600 cm
Package 1 Length	300.000 cm
Package 1 Weight	132 g
Unit Type of Package 2	POLYBAG
Number of Units in Package 2	50 x 3.000 m
Package 2 Height	9.000 cm
Package 2 Width	12.000 cm
Package 2 Length	3.000 cm
Package 2 Weight	6.700 kg

### Contractual warranty

Warranty	12 months
----------	-----------

Disclaimer: This documentation is not intended as a substitute for and is not to be used for determining suitability or reliability of these products for specific user applications

# Product datasheet

Specifications

## Oval rigid conduit – white - 12 mm OVL12W



EAN Code: 5061089310430

### Main

Product or component type	Rigid Conduit - Oval
Colour tint	White
Quantity per set	Set of 150 m

### Complementary

Dimensions	12 mm x 3 m length
material with surface finish	UPVC (unplasticized polyvinyl chloride)

### Packing Units

Unit Type of Package 1	PCE
Number of Units in Package 1	1
Package 1 Height	1.000 cm
Package 1 Width	1.200 cm
Package 1 Length	300.000 cm
Package 1 Weight	142.2 g
Unit Type of Package 2	POLYBAG
Number of Units in Package 2	50 x 3.000 m
Package 2 Height	9.000 cm
Package 2 Width	9.000 cm
Package 2 Length	3.000 cm
Package 2 Weight	7.120 kg

### Contractual warranty

Warranty	12 months
----------	-----------

Disclaimer: This documentation is not intended as a substitute for and is not to be used for determining suitability or reliability of these products for specific user applications

# Product datasheet

Specifications



## Bend - for 32 mm conduit- heavy gauge - white NBH32W

EAN Code: 5061089311291

### Main

Product or component type	Bend
Colour tint	White
Quantity per set	Set of 10

### Complementary

Product destination	diameter: 32 mm conduit
fixing mode	By coupling
Material	UPVC (unplasticized polyvinyl chloride)

### Environment

Standards	BS 4607-5
-----------	-----------

### Packing Units

Unit Type of Package 1	PCE
Number of Units in Package 1	1
Package 1 Height	3.700 cm
Package 1 Width	28.000 cm
Package 1 Length	28.000 cm
Package 1 Weight	183.000 g
Unit Type of Package 2	CAR
Number of Units in Package 2	10
Package 2 Height	10.000 cm
Package 2 Width	32.000 cm
Package 2 Length	53.000 cm
Package 2 Weight	1.830 kg

### Contractual warranty

Warranty	12 months
----------	-----------

# Product datasheet

Specifications



Bend - for 32 mm conduit- heavy gauge -  
black  
NBH32B

EAN Code: 5061089311307

## Main

Product or component type	Bend
Colour tint	Black
Quantity per set	Set of 10

## Complementary

Product destination	diameter: 32 mm conduit
fixing mode	By coupling
Material	UPVC (unplasticized polyvinyl chloride)

## Environment

Standards	BS 4607-5
-----------	-----------

## Packing Units

Unit Type of Package 1	PCE
Number of Units in Package 1	1
Package 1 Height	3.700 cm
Package 1 Width	20.000 cm
Package 1 Length	39.500 cm
Package 1 Weight	170.000 g
Unit Type of Package 2	CAR
Number of Units in Package 2	10
Package 2 Height	11.500 cm
Package 2 Width	34.000 cm
Package 2 Length	48.000 cm
Package 2 Weight	1.710 kg

## Contractual warranty

Warranty 12 months

# Product datasheet

Specifications



Bend - for 25 mm conduit- heavy gauge -  
white  
NBH25W

EAN Code: 5061089311291

## Main

Product or component type	Bend
Colour tint	White
Quantity per set	Set of 20

## Complementary

Product destination	diameter: 25 mm conduit
fixing mode	By coupling
Material	UPVC (unplasticized polyvinyl chloride)

## Environment

Standards	BS 4607-5
-----------	-----------

## Packing Units

Unit Type of Package 1	PCE
Number of Units in Package 1	1
Package 1 Height	2.900 cm
Package 1 Width	12.000 cm
Package 1 Length	30.000 cm
Package 1 Weight	80.000 g
Unit Type of Package 2	CAR
Number of Units in Package 2	20
Package 2 Height	12.000 cm
Package 2 Width	28.000 cm
Package 2 Length	40.000 cm
Package 2 Weight	1.780 kg

## Contractual warranty

Warranty 12 months

# Product datasheet

Specifications



Bend - for 25 mm conduit- heavy gauge -  
black  
NBH32B

EAN Code: 5061089311284

## Main

Product or component type	Bend
Colour tint	Black
Quantity per set	Set of 20

## Complementary

Product destination	diameter: 25 mm conduit
fixing mode	By coupling
Material	UPVC (unplasticized polyvinyl chloride)

## Environment

Standards	BS 4607-5
-----------	-----------

## Packing Units

Unit Type of Package 1	PCE
Number of Units in Package 1	1
Package 1 Height	2.900 cm
Package 1 Width	12.000 cm
Package 1 Length	30.000 cm
Package 1 Weight	80.000 g
Unit Type of Package 2	CAR
Number of Units in Package 2	20
Package 2 Height	12.000 cm
Package 2 Width	28.000 cm
Package 2 Length	40.000 cm
Package 2 Weight	1.780 kg

## Contractual warranty

Warranty 12 months

# Product datasheet

Specifications



Bend - for 20 mm conduit- heavy gauge -  
white  
NBH20W

EAN Code: 5061089311277

## Main

Product or component type	Bend
Colour tint	White
Quantity per set	Set of 25

## Complementary

Product destination	diameter: 20 mm conduit
fixing mode	By coupling
Material	UPVC (unplasticized polyvinyl chloride)

## Environment

Standards	BS 4607-5
-----------	-----------

## Packing Units

Unit Type of Package 1	PCE
Number of Units in Package 1	1
Package 1 Height	2.3 cm
Package 1 Width	15.5 cm
Package 1 Length	15.5 cm
Package 1 Weight	45 g
Unit Type of Package 2	CAR
Number of Units in Package 2	25
Package 2 Height	18 cm
Package 2 Width	18 cm
Package 2 Length	24 cm
Package 2 Weight	1.125 kg

## Contractual warranty

Warranty 12 months

# Product datasheet

Specifications



Bend – for 20 mm conduit – heavy gauge -  
black  
NBH20B

EAN Code: 5061089311260

## Main

Product or component type	Bend
Tint	Black
Provided equipment	2 x couplings
Tint	Set of 25

## Complementary

Product destination	Diameter: 20 mm conduit
Fixing mode	By coupling
Material	UPVC (unplasticized polyvinyl chloride)
Standard	BS 4607-5

## Packing Units

Unit Type of Package 1	PCE
Number of Units in Package 1	1
Package 1 Height	6.770 cm
Package 1 Width	6.770 cm
Package 1 Length	6.770 cm
Package 1 Weight	33.600 g
Unit Type of Package 2	CAR
Number of Units in Package 2	25
Package 2 Height	18.000 cm
Package 2 Width	18.300 cm
Package 2 Length	24.000 cm
Package 2 Weight	1.166 kg

## Contractual warranty

Warranty 12 months

# Product datasheet

Specifications



## Earth electrode box - black MEB1B

EAN Code: 5061089315589

### Main

Product or component type	Earth electrode box
Tint	Black
Quantity per set	Set of 10

### Complementary

Shape	Round
Material	UPVC (unplasticized polyvinyl chloride)

### Packing Units

Unit Type of Package 1	PCE
Number of Units in Package 1	1
Package 1 Height	6.500 cm
Package 1 Width	9.000 cm
Package 1 Length	6.700 cm
Package 1 Weight	91.000 g
Unit Type of Package 2	CAR
Number of Units in Package 2	100
Package 2 Height	18.000 cm
Package 2 Width	18.300 cm
Package 2 Length	23.000 cm
Package 2 Weight	1.000 kg

### Contractual warranty

Warranty 12 months

# Product datasheet

Specifications



## Male bush – plastic – for 25mm conduit - white MBS25W

EAN Code: 5061089313509

### Main

Product or component type	Male bush
Tint	White
Quantity per set	Set of 100

### Complementary

Product destination	Diameter: 25 mm conduit
Material	UPVC (unplasticized polyvinyl chloride)
Fixing mode	Screwed
Standards	BS 4607-5

### Packing Units

Unit Type of Package 1	PCE
Number of Units in Package 1	1
Package 1 Height	3.630 cm
Package 1 Width	3.630 cm
Package 1 Length	3.630 cm
Package 1 Weight	4.000 g
Unit Type of Package 2	CAR
Number of Units in Package 2	100
Package 2 Height	11.000 cm
Package 2 Width	19.000 cm
Package 2 Length	23.000 cm
Package 2 Weight	400.000 g

### Contractual warranty

Warranty 12 months

# Product datasheet

Specifications



Male bush – plastic – for 25mm conduit -  
black  
MBS25B

EAN Code: 5061089313493

## Main

Product or component type	Male bush
Tint	Black
Quantity per set	Set of 100

## Complementary

Product destination	Diameter: 25 mm conduit
Material	UPVC (unplasticized polyvinyl chloride)
Fixing mode	Screwed
Standards	BS 4607-5

## Packing Units

Unit Type of Package 1	PCE
Number of Units in Package 1	1
Package 1 Height	3.630 cm
Package 1 Width	3.630 cm
Package 1 Length	3.630 cm
Package 1 Weight	4.000 g
Unit Type of Package 2	CAR
Number of Units in Package 2	100
Package 2 Height	11.000 cm
Package 2 Width	19.000 cm
Package 2 Length	23.000 cm
Package 2 Weight	400.000 g

## Contractual warranty

Warranty 12 months

# Product datasheet

Specifications



## Male bush – plastic – for 20mm conduit - white MBS20W

EAN Code: 5061089315572

### Main

Product or component type	Male bush
Tint	White
Quantity per set	Set of 100

### Complementary

Product destination	Diameter: 20 mm conduit
Material	UPVC (unplasticized polyvinyl chloride)
Fixing mode	Screwed
Standards	BS 4607-5

### Packing Units

Unit Type of Package 1	PCE
Number of Units in Package 1	1
Package 1 Height	1.400 cm
Package 1 Width	2.400 cm
Package 1 Length	2.400 cm
Package 1 Weight	1.900 g
Unit Type of Package 2	CAR
Number of Units in Package 2	100
Package 2 Height	7.700 cm
Package 2 Width	13.000 cm
Package 2 Length	15.500 cm
Package 2 Weight	250.000 g

### Contractual warranty

Warranty 12 months

# Product datasheet

Specifications



Male bush – plastic – for 20mm conduit -  
black  
MBS20B

EAN Code: 5061089313486

## Main

Product or component type	Male bush
Tint	Black
Quantity per set	Set of 100

## Complementary

Product destination	Diameter: 20 mm conduit
Material	UPVC (unplasticized polyvinyl chloride)
Fixing mode	Screwed
Standards	BS 4607-5

## Packing Units

Unit Type of Package 1	PCE
Number of Units in Package 1	1
Package 1 Height	1.400 cm
Package 1 Width	2.400 cm
Package 1 Length	2.400 cm
Package 1 Weight	1.900 g
Unit Type of Package 2	CAR
Number of Units in Package 2	100
Package 2 Height	7.700 cm
Package 2 Width	13.000 cm
Package 2 Length	15.500 cm
Package 2 Weight	250.000 g

## Contractual warranty

Warranty 12 months

# Product datasheet

Specifications



Bell mouth bush – plastic – for 25mm conduit -  
white  
MBB25W

EAN Code: 5061089311479

## Main

Product or component type	Bell mouth bush
Tint	White
Quantity per set	Set of 100

## Complementary

Product destination	Diameter: 25 mm conduit
Material	UPVC (unplasticized polyvinyl chloride)
Standards	BS 4607-5

## Packing Units

Unit Type of Package 1	PCE
Number of Units in Package 1	1
Package 1 Height	3.630 cm
Package 1 Width	3.630 cm
Package 1 Length	3.630 cm
Package 1 Weight	4.900 g
Unit Type of Package 2	CAR
Number of Units in Package 2	100
Package 2 Height	11.000 cm
Package 2 Width	19.000 cm
Package 2 Length	23.000 cm
Package 2 Weight	488.000 g

## Contractual warranty

Warranty 12 months

# Product datasheet

Specifications



## Cheese head screw – steel – M4 x 10 mm M4X10MM

EAN Code: 5061089311086

### Main

Product or component type	Screw
---------------------------	-------

Quantity per set	Set of 100
------------------	------------

### Complementary

Material	Steel
----------	-------

Shape of screw head	Cheese head
---------------------	-------------

Thread type	M4
-------------	----

Screw length	10 mm
--------------	-------

### Packing Units

Unit Type of Package 1	PCE
------------------------	-----

Number of Units in Package 1	1
------------------------------	---

Package 1 Height	0.600 cm
------------------	----------

Package 1 Width	0.600 cm
-----------------	----------

Package 1 Length	1.200 cm
------------------	----------

Package 1 Weight	1.000 g
------------------	---------

Unit Type of Package 2	CAR
------------------------	-----

Number of Units in Package 2	100
------------------------------	-----

Package 2 Height	1.500 cm
------------------	----------

Package 2 Width	5.000 cm
-----------------	----------

Package 2 Length	13.000 cm
------------------	-----------

Package 2 Weight	130.000 g
------------------	-----------

### Contractual warranty

Warranty	12 months
----------	-----------

# Product datasheet

Specifications



Circular lid – overlapping – 85 mm diameter -  
white  
LID2W

EAN Code: 5061089313455

## Main

Product or component type	Lid
Colour tint	White
Quantity per set	Set of 100

## Complementary

Product destination	Circular junction box
Fixing mode	screwed
Material	UPVC (unplasticized polyvinyl chloride)
Diameter	85 mm

## Environment

Standards	BS 4607-5
-----------	-----------

## Packing Units

Unit Type of Package 1	PCE
Number of Units in Package 1	1
Package 1 Height	0.200 cm
Package 1 Width	6.500 cm
Package 1 Length	6.500 cm
Package 1 Weight	9.000 g
Unit Type of Package 2	CAR
Number of Units in Package 2	100
Package 2 Height	8.000 cm
Package 2 Width	13.000 cm
Package 2 Length	15.300 cm
Package 2 Weight	987.100 g

## Contractual warranty

Warranty	12 months
----------	-----------

# Product datasheet

Specifications



Circular lid – overlapping – 85 mm diameter -  
black  
LID2B

EAN Code: 5061089313462

## Main

Product or component type	Lid
Colour tint	Black
Quantity per set	Set of 100

## Complementary

Product destination	Circular junction box
Fixing mode	screwed
Material	UPVC (unplasticized polyvinyl chloride)
Diameter	85 mm

## Environment

Standards	BS 4607-5
-----------	-----------

## Packing Units

Unit Type of Package 1	PCE
Number of Units in Package 1	1
Package 1 Height	3.630 cm
Package 1 Width	3.630 cm
Package 1 Length	3.630 cm
Package 1 Weight	15.100 g
Unit Type of Package 2	CAR
Number of Units in Package 2	100
Package 2 Height	11.000 cm
Package 2 Width	19.000 cm
Package 2 Length	23.000 cm
Package 2 Weight	1.513 kg

## Contractual warranty

Warranty	12 months
----------	-----------

# Product datasheet

Specifications



Circular lid - standard - 65 mm diameter  
white  
**LID1W**

---

EAN Code: 5061089313431

---

## Main

Product or component type	Lid
Colour tint	White
Quantity per set	Set of 100

## Complementary

Material	UPVC (unplasticized polyvinyl chloride)
Diameter	65 mm

## Packing Units

Unit Type of Package 1	PCE
Number of Units in Package 1	1
Package 1 Height	0.200 cm
Package 1 Width	6.400 cm
Package 1 Length	6.400 cm
Package 1 Weight	9.000 g
Unit Type of Package 2	CAR
Number of Units in Package 2	100
Package 2 Height	8.000 cm
Package 2 Width	13.000 cm
Package 2 Length	15.300 cm
Package 2 Weight	987.100 g

## Contractual warranty

Warranty	12 months
----------	-----------

Disclaimer: This documentation is not intended as a substitute for and is not to be used for determining suitability or reliability of these products for specific user applications

# Product datasheet

Specifications



Circular lid – standard – 65 mm diameter -  
black  
LID1B

EAN Code: 5061089313448

## Main

Product or component type	Lid
Colour tint	Black
Quantity per set	Set of 100

## Complementary

Product destination	Circular junction box
Fixing mode	screwed
Material	UPVC (unplasticized polyvinyl chloride)
Diameter	65 mm

## Environment

Standards	BS 4607-5
-----------	-----------

## Packing Units

Unit Type of Package 1	PCE
Number of Units in Package 1	1
Package 1 Height	0.200 cm
Package 1 Width	6.500 cm
Package 1 Length	6.500 cm
Package 1 Weight	9.000 g
Unit Type of Package 2	CAR
Number of Units in Package 2	100
Package 2 Height	8.000 cm
Package 2 Width	13.000 cm
Package 2 Length	15.300 cm
Package 2 Weight	959.000 g

## Contractual warranty

Warranty	12 months
----------	-----------

# Product datasheet

Specifications



## Surface mounting box - 2 gangs - 32mm deep square corner with knock-out KBU322W

EAN Code: 5061089313400

### Main

Product or component type	Mounting box
Colour tint	White
Quantity per set	Set of 10

### Complementary

Number of gangs	2 gangs
Device mounting	Surface
Mounting support	Wall
Shape	Square corner
Material	UPVC (unplasticized polyvinyl chloride)
cabl e entry	Knock-out
Depth	32 mm

### Environment

Standards	BS 4662
-----------	---------

### Packing Units

Unit Type of Package 1	PCE
Number of Units in Package 1	1
Package 1 Height	8.800 cm
Package 1 Width	3.400 cm
Package 1 Length	14.700 cm
Package 1 Weight	108.000 g
Unit Type of Package 2	CAR
Number of Units in Package 2	10
Package 2 Height	18.200 cm
Package 2 Width	24.000 cm
Package 2 Length	18.200 cm
Package 2 Weight	1.190 kg

### Contractual warranty

Warranty 12 months

# Product datasheet

Specifications



## Surface mounting box - 1 gang - 32 mm deep square corner with knock-out KBU321W

EAN Code: 5061089313387

### Main

Product or component type	Mounting box
Colour tint	White
Quantity per set	Set of 10

### Complementary

Number of gangs	1 gang
Device mounting	Surface
Mounting support	Wall
Shape	Square corner
Material	UPVC (unplasticized polyvinyl chloride)
cabl e entry	Knock-out
Depth	32 mm

### Environment

Standards	BS 4662
-----------	---------

### Packing Units

Unit Type of Package 1	PCE
Number of Units in Package 1	1
Package 1 Height	3.3 cm
Package 1 Width	8.7 cm
Package 1 Length	8.7 cm
Package 1 Weight	69 g
Unit Type of Package 2	CAR
Number of Units in Package 2	10
Package 2 Height	11 cm
Package 2 Width	19 cm
Package 2 Length	22.5 cm
Package 2 Weight	787 g

### Contractual warranty

Warranty	12 months
----------	-----------

# Product datasheet

Specifications



## Surface mounting box - 2 gangs - 32mm deep round corner with knock-out KBR322W

EAN Code: 5061089313363

### Main

Product or component type	Mounting box
Colour tint	White
Quantity per set	Set of 10

### Complementary

Number of gangs	2 gangs
Device mounting	Surface
Mounting support	Wall
Shape	Round corner
Material	UPVC (unplasticized polyvinyl chloride)
cabl e entry	Knock-out
Depth	32 mm

### Environment

Standards	BS 4662
-----------	---------

### Packing Units

Unit Type of Package 1	PCE
Number of Units in Package 1	1
Package 1 Height	3.400 cm
Package 1 Width	8.700 cm
Package 1 Length	14.600 cm
Package 1 Weight	107.000 g
Unit Type of Package 2	CAR
Number of Units in Package 2	10
Package 2 Height	18.000 cm
Package 2 Width	18.500 cm
Package 2 Length	23.000 cm
Package 2 Weight	1.170 kg

### Contractual warranty

Warranty 12 months

# Product datasheet

Specifications



## Surface mounting box - 1 gang - 32 mm deep round corner with knock-out KBR321W

EAN Code: 5061089313349

### Main

Product or component type	Mounting box
Colour tint	White
Quantity per set	Set of 10

### Complementary

Number of gangs	1 gang
Device mounting	Surface
Mounting support	Wall
Shape	Round corner
Material	UPVC (unplasticized polyvinyl chloride)
cabl e entry	Knock-out
Depth	32 mm

### Environment

Standards	BS 4662
-----------	---------

### Packing Units

Unit Type of Package 1	PCE
Number of Units in Package 1	1
Package 1 Height	3.400 cm
Package 1 Width	8.700 cm
Package 1 Length	8.700 cm
Package 1 Weight	68.000 g
Unit Type of Package 2	CAR
Number of Units in Package 2	10
Package 2 Height	10.800 cm
Package 2 Width	19.000 cm
Package 2 Length	22.500 cm
Package 2 Weight	769.000 g

### Contractual warranty

Warranty	12 months
----------	-----------

# Product datasheet

Specifications



Extension ring – 50 mm - white

EXR50W

EAN Code: 5061089315299

## Main

Product name Circular Junction Box Accessories

Product type Extension Ring

Colour tint White

Quantity per set Set of 10

## Complementary

Fixing mode Screw Fix

Depth 50 mm

Material uPVC

## Environment

Ambient air temperature for operation -5...60 °C

## Packing Units

Unit Type of Package 1 PCE

Number of Units in Package 1 1

Package 1 Height 7.830 cm

Package 1 Width 7.830 cm

Package 1 Length 7.830 cm

Package 1 Weight 48.000 g

Unit Type of Package 2 BOX

Number of Units in Package 2 10

Package 2 Height 11.000 cm

Package 2 Width 19.000 cm

Package 2 Length 23.000 cm

Package 2 Weight 480.000 g

## Contractual warranty

Warranty 12 months

Disclaimer: This documentation is not intended as a substitute for and is not to be used for determining suitability or reliability of these products for specific user applications.

# Product datasheet

Specifications



Extension ring – 25 mm - white

EXR25W

EAN Code: 5061089315282

## Main

**Product name** Circular Junction Box Accessories

**Product type** Extension Ring

**Colour tint** White

**Quantity per set** Set of 25

## Complementary

**Fixing mode** Screw Fix

**Depth** 50 mm

**Material** uPVC

## Environment

**Ambient air temperature for operation** -5...60 °C

## Packing Units

**Unit Type of Package 1** PCE

**Number of Units in Package 1** 1

**Package 1 Height** 5.770 cm

**Package 1 Width** 5.770 cm

**Package 1 Length** 5.770 cm

**Package 1 Weight** 24.800 g

**Unit Type of Package 2** BOX

**Number of Units in Package 2** 25

**Package 2 Height** 11.000 cm

**Package 2 Width** 19.000 cm

**Package 2 Length** 23.000 cm

**Package 2 Weight** 620.000 g

## Contractual warranty

**Warranty** 12 months

# Product datasheet

Specifications



## Round spring clip saddle for 25mm conduit – white CSA25W

EAN Code: 5061089314834

### Main

Product or component type	Conduit clip
Colour tint	White
Quantity per set	Set of 50

### Complementary

Product destination	diameter: 25 mm conduit
Fixing mode	screwed
Material	UPVC (unplasticized polyvinyl chloride)

### Environment

Standards	BS 4607-5
-----------	-----------

### Packing Units

Unit Type of Package 1	PCE
Number of Units in Package 1	1
Package 1 Height	1.200 cm
Package 1 Width	2.600 cm
Package 1 Length	3.100 cm
Package 1 Weight	4.700 g
Unit Type of Package 2	CAR
Number of Units in Package 2	50
Package 2 Height	7.100 cm
Package 2 Width	13.000 cm
Package 2 Length	15.300 cm
Package 2 Weight	280.000 g

### Contractual warranty

Warranty	12 months
----------	-----------

# Product datasheet

Specifications



## Round spring clip saddle for 25mm conduit – black CSA25B

EAN Code: 5061089314827

### Main

Product or component type	Conduit clip
Colour tint	Black
Quantity per set	Set of 50

### Complementary

Product destination	diameter: 25 mm conduit
Fixing mode	screwed
Material	UPVC (unplasticized polyvinyl chloride)

### Environment

Standards	BS 4607-5
-----------	-----------

### Packing Units

Unit Type of Package 1	PCE
Number of Units in Package 1	1
Package 1 Height	1.200 cm
Package 1 Width	2.600 cm
Package 1 Length	3.100 cm
Package 1 Weight	4.700 g
Unit Type of Package 2	CAR
Number of Units in Package 2	50
Package 2 Height	7.100 cm
Package 2 Width	13.000 cm
Package 2 Length	15.300 cm
Package 2 Weight	280.000 g

### Contractual warranty

Warranty	12 months
----------	-----------

# Product datasheet

Specifications



## Round spring clip saddle for 20mm conduit – white CSA20W

\_\_\_\_\_  
**EAN Code: 5061089314810**  
\_\_\_\_\_

### Main

<b>Product or component type</b>	Conduit clip
<b>Colour tint</b>	White
<b>Quantity per set</b>	Set of 100

### Complementary

<b>Product destination</b>	diameter: 20 mm conduit
<b>Fixing mode</b>	screwed
<b>Material</b>	UPVC (unplasticized polyvinyl chloride)

### Environment

<b>Standards</b>	BS 4607-5
------------------	-----------

### Packing Units

<b>Unit Type of Package 1</b>	PCE
<b>Number of Units in Package 1</b>	1
<b>Package 1 Height</b>	1.100 cm
<b>Package 1 Width</b>	2.100 cm
<b>Package 1 Length</b>	2.500 cm
<b>Package 1 Weight</b>	3.700 g
<b>Unit Type of Package 2</b>	CAR
<b>Number of Units in Package 2</b>	100
<b>Package 2 Height</b>	8.000 cm
<b>Package 2 Width</b>	13.000 cm
<b>Package 2 Length</b>	15.300 cm
<b>Package 2 Weight</b>	424.100 g

### Contractual warranty

<b>Warranty</b>	12 months
-----------------	-----------

# Product datasheet

Specifications



Round spring clip saddle – 20 mm  
conduit – black

**CSA20B**

EAN Code: 5061089314803

## Main

**Product name** Conduit Accessories

**Product or component type** Spring clip saddle

**Colour tint** Black

**Quantity per set** Set of 100

## Complementary

**Product destination** 20mm round conduit

**Fixing mode** Screw

**Material** uPVC

**Standard** BS 4607-5

## Environment

**Ambient air temperature for operation** -5...60 °C

## Packing Units

**Unit Type of Package 1** PCE

**Number of Units in Package 1** 1

**Package 1 Height** 1.100 cm

**Package 1 Width** 2.1000 cm

**Package 1 Length** 2.500 cm

**Package 1 Weight** 3.700 g

**Unit Type of Package 2** BOX

**Number of Units in Package 2** 100

**Package 2 Height** 8.000 cm

**Package 2 Width** 13.0000 cm

**Package 2 Length** 15.300 cm

**Package 2 Weight** 424.100 g

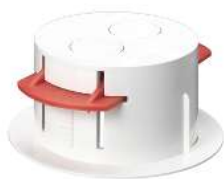
## Contractual warranty

**Warranty** 12 months

Disclaimer: This documentation is not intended as a substitute for and is not to be used for determining suitability or reliability of these products for specific user applications.

# Product datasheet

Specifications



Circular dry lining box – 2 knockouts –  
67 mm diameter

**CRB2W**

EAN Code: 5061089314452

## Main

Product name	Conduit Accessories
Product or component type	Circular Dry Lining Box
Colour tint	White
Quantity per set	Set of 10

## Complementary

No. knockouts	2
Fixing mode	Snap fit lugs
Material	uPVC
Diameter	67 mm

## Environment

Ambient air temperature for operation	-5...60 °C
---------------------------------------	------------

## Packing Units

Unit Type of Package 1	PCE
Number of Units in Package 1	1
Package 1 Height	3.600 cm
Package 1 Width	8.1000 cm
Package 1 Length	8.300 cm
Package 1 Weight	38.000 g5
Unit Type of Package 2	BOX
Number of Units in Package 2	10
Package 2 Height	11.000 cm
Package 2 Width	19.0000 cm
Package 2 Length	23.000 cm
Package 2 Weight	485.000 g

## Contractual warranty

Warranty	12 months
----------	-----------

Disclaimer: This documentation is not intended as a substitute for and is not to be used for determining suitability or reliability of these products for specific user applications.

# Product datasheet

Specifications



Ceiling box – 16 mm x 16 mm to 25 mm x 16 mm entries

**CRA12W**

EAN Code: 5061089314445

## Main

**Product name** Mini Trunking accessories

**Product or component type** Ceiling box

**Colour tint** White

**Quantity per set** Set of 25

## Complementary

**Width** 16 mm x 16 mm, 25 mm x 16 mm

**Fixing center** 50.8 mm

**Material** uPVC

**Diameter** 82 mm

## Environment

**Ambient air temperature for operation** -5...60 °C

## Packing Units

**Unit Type of Package 1** PCE

**Number of Units in Package 1** 1

**Package 1 Height** 6.210 cm

**Package 1 Width** 6.2100 cm

**Package 1 Length** 6.2100 cm

**Package 1 Weight** 37.000 g

**Unit Type of Package 2** BOX

**Number of Units in Package 2** 25

**Package 2 Height** 11.000 cm

**Package 2 Width** 19.0000 cm

**Package 2 Length** 23.000 cm

**Package 2 Weight** 935.000 g

## Contractual warranty

**Warranty** 12 months

Disclaimer: This documentation is not intended as a substitute for and is not to be used for determining suitability or reliability of these products for specific user applications.

# Product datasheet

Specifications



## Lockring screwed – plastic – for 25mm conduit CLR25W

EAN Code: 5061089314797

### Main

Product or component type	Lockring
Colour tint	White
Quantity per set	Set of 100

### Complementary

Product destination	diameter: 25 mm conduit
Fixing mode	screwed
Material	UPVC (unplasticized polyvinyl chloride)

### Environment

Standards	BS 4607-5
-----------	-----------

### Packing Units

Unit Type of Package 1	PCE
Number of Units in Package 1	1
Package 1 Height	0.60 cm
Package 1 Width	2.90 cm
Package 1 Length	2.90 cm
Package 1 Weight	21.800 g
Unit Type of Package 2	CAR
Number of Units in Package 2	100
Package 2 Height	7.700 CM
Package 2 Width	13.200 cm
Package 2 Length	15.600 cm
Package 2 Weight	218.000 g

### Contractual warranty

Warranty	12 months
----------	-----------

# Product datasheet

Specifications



## Lockring screwed – plastic – for 25mm conduit CLR25B

EAN Code: 5061089314780

### Main

Product or component type	Lockring
Colour tint	Black
Quantity per set	Set of 100

### Complementary

Product destination	diameter: 25 mm conduit
Fixing mode	screwed
Material	UPVC (unplasticized polyvinyl chloride)

### Environment

Standards	BS 4607-5
-----------	-----------

### Packing Units

Unit Type of Package 1	PCE
Number of Units in Package 1	1
Package 1 Height	0.60 cm
Package 1 Width	2.90 cm
Package 1 Length	2.90 cm
Package 1 Weight	21.800 g
Unit Type of Package 2	CAR
Number of Units in Package 2	100
Package 2 Height	7.700 CM
Package 2 Width	13.200 cm
Package 2 Length	15.600 cm
Package 2 Weight	218.000 g

### Contractual warranty

Warranty	12 months
----------	-----------

# Product datasheet

Specifications



## Lockring screwed – plastic – for 20mm conduit CLR20W

EAN Code: 5061089314773

### Main

Product or component type	Lockring
Colour tint	White
Quantity per set	Set of 100

### Complementary

Product destination	diameter: 20 mm conduit
Fixing mode	screwed
Material	UPVC (unplasticized polyvinyl chloride)

### Environment

Standards	BS 4607-5
-----------	-----------

### Packing Units

Unit Type of Package 1	PCE
Number of Units in Package 1	1
Package 1 Height	0.50 cm
Package 1 Width	2.50 cm
Package 1 Length	2.50 cm
Package 1 Weight	30.000 g
Unit Type of Package 2	CAR
Number of Units in Package 2	100
Package 2 Height	7.700 CM
Package 2 Width	13.100 cm
Package 2 Length	15.400 cm
Package 2 Weight	177.000 g

### Contractual warranty

Warranty	12 months
----------	-----------

# Product datasheet

Specifications



## Lockring screwed – plastic – for 20mm conduit CLR20B

EAN Code: 5061089314766

### Main

Product or component type	Lockring
Colour tint	Black
Quantity per set	Set of 100

### Complementary

Product destination	diameter: 20 mm conduit
Fixing mode	screwed
Material	UPVC (unplasticized polyvinyl chloride)

### Environment

Standards	BS 4607-5
-----------	-----------

### Packing Units

Unit Type of Package 1	PCE
Number of Units in Package 1	1
Package 1 Height	0.50 cm
Package 1 Width	2.50 cm
Package 1 Length	2.50 cm
Package 1 Weight	30.000 g
Unit Type of Package 2	CAR
Number of Units in Package 2	100
Package 2 Height	7.700 CM
Package 2 Width	13.100 cm
Package 2 Length	15.400 cm
Package 2 Weight	177.000 g

### Contractual warranty

Warranty	12 months
----------	-----------

# Product datasheet

Specifications



No spout circular junction box - white

CJB12W

EAN Code: 5061089314476

## Main

Product name Conduit Accessories

Product or component type Junction box

Colour tint White

Quantity per set Set of 20

## Complementary

Cable entry None

Product compatibility Insert clip when used to suspend lighting units

Material uPVC

Maximum load 3 kg at 60 °C

## Environment

Ambient air temperature for operation -5...60 °C

## Packing Units

Unit Type of Package 1 PCE

Number of Units in Package 1 1

Package 1 Height 6.210 cm

Package 1 Width 6.2000 cm

Package 1 Length 6.210 cm

Package 1 Weight 39.800 g

Unit Type of Package 2 BOX

Number of Units in Package 2 20

Package 2 Height 11.000 cm

Package 2 Width 19.000 cm

Package 2 Length 23.000 cm

Package 2 Weight 795.000 g

## Contractual warranty

Warranty 12 months

Disclaimer: This documentation is not intended as a substitute for and is not to be used for determining suitability or reliability of these products for specific user applications.

# Product datasheet

Specifications



No spout circular junction box - black

CJB12B

EAN Code: 5061089314469

## Main

Product name Conduit Accessories

Product or component type Junction box

Colour tint Black

Quantity per set Set of 20

## Complementary

Cable entry None

Product compatibility Insert clip when used to suspend lighting units

Material uPVC

Maximum load 3 kg at 60 °C

## Environment

Ambient air temperature for operation -5...60 °C

## Packing Units

Unit Type of Package 1 PCE

Number of Units in Package 1 1

Package 1 Height 6.210 cm

Package 1 Width 6.2000 cm

Package 1 Length 6.210 cm

Package 1 Weight 39.800 g

Unit Type of Package 2 BOX

Number of Units in Package 2 20

Package 2 Height 11.000 cm

Package 2 Width 19.000 cm

Package 2 Length 23.000 cm

Package 2 Weight 795.000 g

## Contractual warranty

Warranty 12 months

Disclaimer: This documentation is not intended as a substitute for and is not to be used for determining suitability or reliability of these products for specific user applications.

# Product datasheet

Specifications



## 4-way intersection box - white 25CJB6W

EAN Code: 5061089313288

### Main

Product or component type	Junction box
Colour tint	White
Quantity per set	Set of 10

### Complementary

Cable entry	4 tube entry
Product destination	diameter: 25 mm conduit
Product compatibility	Insert clip when used to suspend lighting units
Maximum load	3 kg at 60 °C
Material	UPVC (unplasticized polyvinyl chloride)

### Environment

Standards	BS 4607-5
-----------	-----------

### Packing Units

Unit Type of Package 1	PCE
Number of Units in Package 1	1
Package 1 Height	9.190 cm
Package 1 Width	9.190 cm
Package 1 Length	9.190 cm
Package 1 Weight	68.600 g
Unit Type of Package 2	CAR
Number of Units in Package 2	10
Package 2 Height	18.000 cm
Package 2 Width	18.000 cm
Package 2 Length	24.000 cm
Package 2 Weight	686.000 g

### Contractual warranty

Warranty	12 months
----------	-----------

# Product datasheet

Specifications



## 4-way intersection box - black 25CJB6B

EAN Code: 5061089313271

### Main

Product or component type	Junction box
Colour tint	Black
Quantity per set	Set of 10

### Complementary

Cable entry	4 tube entry
Product destination	diameter: 25 mm conduit
Product compatibility	Insert clip when used to suspend lighting units
Maximum load	3 kg at 60 °C
Material	UPVC (unplasticized polyvinyl chloride)

### Environment

Standards	BS 4607-5
-----------	-----------

### Packing Units

Unit Type of Package 1	PCE
Number of Units in Package 1	1
Package 1 Height	9.190 cm
Package 1 Width	9.190 cm
Package 1 Length	9.190 cm
Package 1 Weight	68.600 g
Unit Type of Package 2	CAR
Number of Units in Package 2	10
Package 2 Height	18.000 cm
Package 2 Width	18.000 cm
Package 2 Length	24.000 cm
Package 2 Weight	686.000 g

### Contractual warranty

Warranty	12 months
----------	-----------

# Product datasheet

Specifications



## 3-way tee box - for 25 mm conduit - white 25CJB5W

EAN Code: 5061089313264

### Main

Product or component type	Junction box
Colour tint	White
Quantity per set	Set of 10

### Complementary

Cable entry	3 tube entry
Junction box type	Tee
Product destination	diameter: 25 mm conduit
Product compatibility	Insert clip when used to suspend lighting units
Maximum load	3 kg at 60 °C
Material	UPVC (unplasticized polyvinyl chloride)

### Environment

Standards	BS 4607-5
-----------	-----------

### Packing Units

Unit Type of Package 1	PCE
Number of Units in Package 1	1
Package 1 Height	3.800 cm
Package 1 Width	9.000 cm
Package 1 Length	11.500 cm
Package 1 Weight	52.000 g
Unit Type of Package 2	CAR
Number of Units in Package 2	10
Package 2 Height	18.000 cm
Package 2 Width	18.000 cm
Package 2 Length	23.000 cm
Package 2 Weight	626.000 g

### Contractual warranty

Warranty	12 months
----------	-----------

# Product datasheet

Specifications



## 3-way tee box - for 25 mm conduit - black 25CJB5B

EAN Code: 5061089313257

### Main

Product or component type	Junction box
Colour tint	Black
Quantity per set	Set of 10

### Complementary

Cable entry	3 tube entry
Junction box type	Tee
Product destination	diameter: 25 mm conduit
Product compatibility	Insert clip when used to suspend lighting units
Maximum load	3 kg at 60 °C
Material	UPVC (unplasticized polyvinyl chloride)

### Environment

Standards	BS 4607-5
-----------	-----------

### Packing Units

Unit Type of Package 1	PCE
Number of Units in Package 1	1
Package 1 Height	3.800 cm
Package 1 Width	9.000 cm
Package 1 Length	11.500 cm
Package 1 Weight	52.000 g
Unit Type of Package 2	CAR
Number of Units in Package 2	10
Package 2 Height	18.000 cm
Package 2 Width	18.000 cm
Package 2 Length	23.000 cm
Package 2 Weight	635.000 g

### Contractual warranty

Warranty	12 months
----------	-----------

# Product datasheet

Specifications



## 2-way angle box - for 25 mm conduit - white 25CJB4W

EAN Code: 5061089313240

### Main

Product or component type	Junction box
Colour tint	White
Quantity per set	Set of 10

### Complementary

Cable entry	2 tube entry
Junction box type	Angle
Product destination	diameter: 25 mm conduit
Product compatibility	Insert clip when used to suspend lighting units
Maximum load	3 kg at 60 °C
Material	UPVC (unplasticized polyvinyl chloride)

### Environment

Standards	BS 4607-5
-----------	-----------

### Packing Units

Unit Type of Package 1	PCE
Number of Units in Package 1	1
Package 1 Height	3.900 cm
Package 1 Width	9.000 cm
Package 1 Length	9.000 cm
Package 1 Weight	48.000 g
Unit Type of Package 2	CAR
Number of Units in Package 2	10
Package 2 Height	18.000 cm
Package 2 Width	18.500 cm
Package 2 Length	23.000 cm
Package 2 Weight	581.000 g

### Contractual warranty

Warranty	12 months
----------	-----------

# Product datasheet

Specifications



## 2-way angle box - for 25 mm conduit - black 25CJB4B

EAN Code: 5061089313233

### Main

Product or component type	Junction box
Colour tint	Black
Quantity per set	Set of 10

### Complementary

Cable entry	2 tube entry
Junction box type	Angle
Product destination	diameter: 25 mm conduit
Product compatibility	Insert clip when used to suspend lighting units
Maximum load	3 kg at 60 °C
Material	UPVC (unplasticized polyvinyl chloride)

### Environment

Standards	BS 4607-5
-----------	-----------

### Packing Units

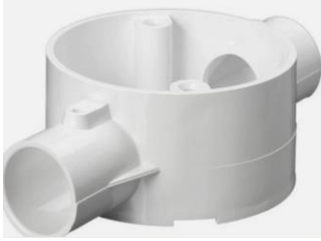
Unit Type of Package 1	PCE
Number of Units in Package 1	1
Package 1 Height	9.190 cm
Package 1 Width	9.190 cm
Package 1 Length	9.190 cm
Package 1 Weight	56.200 g
Unit Type of Package 2	CAR
Number of Units in Package 2	10
Package 2 Height	18.000 cm
Package 2 Width	18.000 cm
Package 2 Length	24.000 cm
Package 2 Weight	562.000 g

### Contractual warranty

Warranty	12 months
----------	-----------

# Product datasheet

Specifications



## 2-way through box - for 25mm conduit white 25CJB3W

EAN Code: 5061089313226

### Main

Product or component type	Junction box
Colour tint	White
Quantity per set	Set of 10

### Complementary

Cable entry	2 tube entry
Junction box type	Through
Product destination	diameter: 25 mm conduit
Product compatibility	Insert clip when used to suspend lighting units
Maximum load	3 kg at 60 °C
Material	UPVC (unplasticized polyvinyl chloride)

### Environment

Standards	BS 4607-5
-----------	-----------

### Packing Units

Unit Type of Package 1	PCE
Number of Units in Package 1	1
Package 1 Height	3.800 cm
Package 1 Width	6.500 cm
Package 1 Length	11.500 cm
Package 1 Weight	47.000 g
Unit Type of Package 2	CAR
Number of Units in Package 2	10
Package 2 Height	17.000 cm
Package 2 Width	23.500 cm
Package 2 Length	17.000 cm
Package 2 Weight	581.000 g

### Contractual warranty

Warranty	12 months
----------	-----------

# Product datasheet

Specifications



## 2-way through box - for 25 mm conduit - black 25CJB3B

EAN Code: 5061089313219

### Main

Range of product	Cutterwell
Product or component type	Junction box
Colour tint	Black
Quantity per set	Set of 10

### Complementary

Cable entry	2 tube entry
Junction box type	Through
Product destination	diameter: 25 mm conduit
Product compatibility	Insert clip when used to suspend lighting units
Maximum load	3 kg at 60 °C
Material	UPVC (unplasticized polyvinyl chloride)

### Environment

Standards	BS 4607-5
-----------	-----------

### Packing Units

Unit Type of Package 1	PCE
Number of Units in Package 1	1
Package 1 Height	9.190 cm
Package 1 Width	9.190 cm
Package 1 Length	9.190 cm
Package 1 Weight	58.000 g
Unit Type of Package 2	CAR
Number of Units in Package 2	10
Package 2 Height	18.000 cm
Package 2 Width	18.000 cm
Package 2 Length	24.000 cm
Package 2 Weight	580.000 g
Unit Type of Package 3	PAM
Number of Units in Package 3	1440

---

<b>Package 3 Height</b>	115.000 cm
<b>Package 3 Width</b>	120.000 cm
<b>Package 3 Length</b>	100.000 cm
<b>Package 3 Weight</b>	83.520 kg

---

## **Contractual warranty**

---

**Warranty** 12 months

# Product datasheet

Specifications



## 1-way terminal box - for 25 mm conduit - white 25CJB2W

EAN Code: 5061089313202

### Main

Range of product	Cutterwell
Product or component type	Junction box
Colour tint	White
Quantity per set	Set of 20

### Complementary

Cable entry	1 tube entry
Junction box type	Terminal
Product destination	diameter: 25 mm conduit
Product compatibility	Insert clip when used to suspend lighting units
Maximum load	3 kg at 60 °C
Material	UPVC (unplasticized polyvinyl chloride)

### Environment

Standards	BS 4607-5
-----------	-----------

### Packing Units

Unit Type of Package 1	PCE
Number of Units in Package 1	1
Package 1 Height	3.900 cm
Package 1 Width	6.600 cm
Package 1 Length	9.100 cm
Package 1 Weight	40.000 g
Unit Type of Package 2	CAR
Number of Units in Package 2	20
Package 2 Height	18.200 cm
Package 2 Width	18.600 cm
Package 2 Length	23.100 cm
Package 2 Weight	910.000 g
Unit Type of Package 3	PAM
Number of Units in Package 3	2880

---

<b>Package 3 Height</b>	115.000 cm
<b>Package 3 Width</b>	120.000 cm
<b>Package 3 Length</b>	100.000 cm
<b>Package 3 Weight</b>	151.040 kg

---

## **Contractual warranty**

---

<b>Warranty</b>	12 months
-----------------	-----------

# Product datasheet

Specifications



## 1-way terminal box - for 25 mm conduit - black 25CJB2B

EAN Code: 5061089313196

### Main

Range of product	Cutterwell
Product or component type	Junction box
Colour tint	Black
Quantity per set	Set of 20

### Complementary

Cable entry	1 tube entry
Junction box type	Terminal
Product destination	diameter: 25 mm conduit
Product compatibility	Insert clip when used to suspend lighting units
Maximum load	3 kg at 60 °C
Material	UPVC (unplasticized polyvinyl chloride)

### Environment

Standards	BS 4607-5
-----------	-----------

### Packing Units

Unit Type of Package 1	PCE
Number of Units in Package 1	1
Package 1 Height	7.290 cm
Package 1 Width	7.290 cm
Package 1 Length	7.290 cm
Package 1 Weight	45.600 g
Unit Type of Package 2	CAR
Number of Units in Package 2	20
Package 2 Height	18.000 cm
Package 2 Width	18.000 cm
Package 2 Length	24.000 cm
Package 2 Weight	911.000 g
Unit Type of Package 3	PAM
Number of Units in Package 3	2880

---

<b>Package 3 Height</b>	115.000 cm
<b>Package 3 Width</b>	120.000 cm
<b>Package 3 Length</b>	100.000 cm
<b>Package 3 Weight</b>	131.184 kg

---

## **Contractual warranty**

---

<b>Warranty</b>	12 months
-----------------	-----------

# Product datasheet

Specifications



## Back outlet box - white 25CJB1W

EAN Code: 5061089313189

### Main

Product or component type	Junction box
Colour tint	White
Quantity per set	Set of 20

### Complementary

Cable entry	1 tube entry
Product destination	diameter: 25 mm conduit
Product compatibility	Insert clip when used to suspend lighting units
Maximum load	3 kg at 60 °C
Material	UPVC (unplasticized polyvinyl chloride)

### Environment

Standards	BS 4607-5
-----------	-----------

### Packing Units

Unit Type of Package 1	PCE
Number of Units in Package 1	1
Package 1 Height	7.290 cm
Package 1 Width	7.290 cm
Package 1 Length	7.290 cm
Package 1 Weight	50.500 g
Unit Type of Package 2	CAR
Number of Units in Package 2	20
Package 2 Height	18.000 cm
Package 2 Width	18.000 cm
Package 2 Length	24.000 cm
Package 2 Weight	1.100kg

### Contractual warranty

Warranty	12 months
----------	-----------

# Product datasheet

Specifications



## Back outlet box - black 25CJB1B

EAN Code: 5061089313172

### Main

Product or component type	Junction box
Colour tint	Black
Quantity per set	Set of 20

### Complementary

Cable entry	1 tube entry
Product destination	diameter: 25 mm conduit
Product compatibility	Insert clip when used to suspend lighting units
Maximum load	3 kg at 60 °C
Material	UPVC (unplasticized polyvinyl chloride)

### Environment

Standards	BS 4607-5
-----------	-----------

### Packing Units

Unit Type of Package 1	PCE
Number of Units in Package 1	1
Package 1 Height	7.290 cm
Package 1 Width	7.290 cm
Package 1 Length	7.290 cm
Package 1 Weight	50.500 g
Unit Type of Package 2	CAR
Number of Units in Package 2	20
Package 2 Height	18.000 cm
Package 2 Width	18.000 cm
Package 2 Length	24.000 cm
Package 2 Weight	1.100kg

### Contractual warranty

Warranty	12 months
----------	-----------

# Product datasheet

Specifications



## Loop-in box with 4 side knock-outs - white 20CJB20W

EAN Code: 5061089314506

### Main

Product or component type	Junction box
Colour tint	White
Quantity per set	Set of 20

### Complementary

Cable entry	knock-outs Ø 20 mm
Product destination	diameter: 20 mm conduit
Product compatibility	Insert clip when used to suspend lighting units
Maximum load	3 kg at 60 °C
Material	UPVC (unplasticized polyvinyl chloride)

### Environment

Standards	BS 4607-5
-----------	-----------

### Packing Units

Unit Type of Package 1	PCE
Number of Units in Package 1	1
Package 1 Height	7.290 cm
Package 1 Width	7.290 cm
Package 1 Length	7.290 cm
Package 1 Weight	48.700 g
Unit Type of Package 2	CAR
Number of Units in Package 2	20
Package 2 Height	18.000 cm
Package 2 Width	18.000 cm
Package 2 Length	24.000 cm
Package 2 Weight	974.000g

### Contractual warranty

Warranty	12 months
----------	-----------

# Product datasheet

Specifications



## Loop-in box with 4 side knock-outs - black 20CJB20B

EAN Code: 5061089314506

### Main

Product or component type	Junction box
Colour tint	Black
Quantity per set	Set of 20

### Complementary

Cable entry	knock-outs Ø 20 mm
Product destination	diameter: 20 mm conduit
Product compatibility	Insert clip when used to suspend lighting units
Maximum load	3 kg at 60 °C
Material	UPVC (unplasticized polyvinyl chloride)

### Environment

Standards	BS 4607-5
-----------	-----------

### Packing Units

Unit Type of Package 1	PCE
Number of Units in Package 1	1
Package 1 Height	7.290 cm
Package 1 Width	7.290 cm
Package 1 Length	7.290 cm
Package 1 Weight	48.700 g
Unit Type of Package 2	CAR
Number of Units in Package 2	20
Package 2 Height	18.000 cm
Package 2 Width	18.000 cm
Package 2 Length	24.000 cm
Package 2 Weight	974.000g

### Contractual warranty

Warranty	12 months
----------	-----------

# Product datasheet

Specifications



## Branch 3-way box- white 20CJB18W

EAN Code:5061089313042

### Main

Product or component type	Junction box
Colour tint	White
Quantity per set	Set of 20

### Complementary

Cable entry	3 tube entry
Product destination	diameter: 20 mm conduit
Product compatibility	Insert clip when used to suspend lighting units
Maximum load	3 kg at 60 °C
Material	UPVC (unplasticized polyvinyl chloride)

### Environment

Standards	BS 4607-5
-----------	-----------

### Packing Units

Unit Type of Package 1	PCE
Number of Units in Package 1	1
Package 1 Height	7.290 cm
Package 1 Width	7.290 cm
Package 1 Length	7.290 cm
Package 1 Weight	52.000 g
Unit Type of Package 2	CAR
Number of Units in Package 2	20
Package 2 Height	18.000 cm
Package 2 Width	18.000 cm
Package 2 Length	24.000 cm
Package 2 Weight	1.040 kg

### Contractual warranty

Warranty	12 months
----------	-----------

# Product datasheet

Specifications



## Branch 3-way box- black 20CJB18B

EAN Code: 5061089313035

### Main

Product or component type	Junction box
Colour tint	Black
Quantity per set	Set of 20

### Complementary

Cable entry	3 tube entry
Product destination	diameter: 20 mm conduit
Product compatibility	Insert clip when used to suspend lighting units
Maximum load	3 kg at 60 °C
Material	UPVC (unplasticized polyvinyl chloride)

### Environment

Standards	BS 4607-5
-----------	-----------

### Packing Units

Unit Type of Package 1	PCE
Number of Units in Package 1	1
Package 1 Height	7.290 cm
Package 1 Width	7.290 cm
Package 1 Length	7.290 cm
Package 1 Weight	52.000 g
Unit Type of Package 2	CAR
Number of Units in Package 2	20
Package 2 Height	18.000 cm
Package 2 Width	18.000 cm
Package 2 Length	24.000 cm
Package 2 Weight	1.040 kg

### Contractual warranty

Warranty	12 months
----------	-----------

# Product datasheet

Specifications



## Branch 2-way box- white 20CJB17W

EAN Code:5061089313028

### Main

Product or component type	Junction box
Colour tint	White
Quantity per set	Set of 20

### Complementary

Cable entry	2 tube entry
Product destination	diameter: 20 mm conduit
Product compatibility	Insert clip when used to suspend lighting units
Maximum load	3 kg at 60 °C
Material	UPVC (unplasticized polyvinyl chloride)

### Environment

Standards	BS 4607-5
-----------	-----------

### Packing Units

Unit Type of Package 1	PCE
Number of Units in Package 1	1
Package 1 Height	7.290 cm
Package 1 Width	7.290 cm
Package 1 Length	7.290 cm
Package 1 Weight	48.800 g
Unit Type of Package 2	CAR
Number of Units in Package 2	20
Package 2 Height	18.000 cm
Package 2 Width	18.000 cm
Package 2 Length	24.000 cm
Package 2 Weight	975.000 g

### Contractual warranty

Warranty	12 months
----------	-----------

# Product datasheet

Specifications



## Branch 2-way box- black 20CJB17B

EAN Code:5061089313011

### Main

Product or component type	Junction box
Colour tint	Black
Quantity per set	Set of 20

### Complementary

Cable entry	2 tube entry
Product destination	diameter: 20 mm conduit
Product compatibility	Insert clip when used to suspend lighting units
Maximum load	3 kg at 60 °C
Material	UPVC (unplasticized polyvinyl chloride)

### Environment

Standards	BS 4607-5
-----------	-----------

### Packing Units

Unit Type of Package 1	PCE
Number of Units in Package 1	1
Package 1 Height	7.290 cm
Package 1 Width	7.290 cm
Package 1 Length	7.290 cm
Package 1 Weight	48.800 g
Unit Type of Package 2	CAR
Number of Units in Package 2	20
Package 2 Height	18.000 cm
Package 2 Width	18.000 cm
Package 2 Length	24.000 cm
Package 2 Weight	975.000 g

### Contractual warranty

Warranty	12 months
----------	-----------

# Product datasheet

Specifications



## Loop-in box with 4 base knock-outs - white 20CJB13W

EAN Code:5061089313004

### Main

Product or component type	Junction box
Colour tint	White
Quantity per set	Set of 20

### Complementary

Cable entry	4 knock-outs Ø 20 mm
Product destination	diameter: 20 mm conduit
Product compatibility	Insert clip when used to suspend lighting units
Maximum load	3 kg at 60 °C
Material	UPVC (unplasticized polyvinyl chloride)

### Environment

Standards	BS 4607-5
-----------	-----------

### Packing Units

Unit Type of Package 1	PCE
Number of Units in Package 1	1
Package 1 Height	6.210 cm
Package 1 Width	6.210 cm
Package 1 Length	6.210 cm
Package 1 Weight	43.400 g
Unit Type of Package 2	CAR
Number of Units in Package 2	20
Package 2 Height	11.000 cm
Package 2 Width	19.000 cm
Package 2 Length	23.000 cm
Package 2 Weight	867.000 g

### Contractual warranty

Warranty	12 months
----------	-----------

# Product datasheet

Specifications



## Loop-in box with 4 base knock-outs - black 20CJB13B

EAN Code:5061089312991

### Main

Product or component type	Junction box
Colour tint	Black
Quantity per set	Set of 20

### Complementary

Cable entry	4 knock-outs Ø 20 mm
Product destination	diameter: 20 mm conduit
Product compatibility	Insert clip when used to suspend lighting units
Maximum load	3 kg at 60 °C
Material	UPVC (unplasticized polyvinyl chloride)

### Environment

Standards	BS 4607-5
-----------	-----------

### Packing Units

Unit Type of Package 1	PCE
Number of Units in Package 1	1
Package 1 Height	6.210 cm
Package 1 Width	6.210 cm
Package 1 Length	6.210 cm
Package 1 Weight	43.400 g
Unit Type of Package 2	CAR
Number of Units in Package 2	20
Package 2 Height	11.000 cm
Package 2 Width	19.000 cm
Package 2 Length	23.000 cm
Package 2 Weight	867.000 g

### Contractual warranty

Warranty	12 months
----------	-----------

# Product datasheet

Specifications



4-way intersection box – 20mm conduit  
- white

20CJB6W

EAN Code: 5061089313165

## Main

Product name	Circular Junction Box
Product or component type	4 tube entry intersection
Colour tint	White
Quantity per set	Set of 20

## Complementary

Product destination	20mm Conduit
Product compatibility	Insert clip when used to suspend lighting units
Material	uPVC
Maximum load	3kg at 60°C

## Environment

Ambient air temperature for operation	-5...60 °C
---------------------------------------	------------

## Packing Units

Unit Type of Package 1	PCE
Number of Units in Package 1	1
Package 1 Height	7.360 cm
Package 1 Width	7.360 cm
Package 1 Length	7.360 cm
Package 1 Weight	63.500 g
Unit Type of Package 2	BOX
Number of Units in Package 2	20
Package 2 Height	19.000 cm
Package 2 Width	20.000 cm
Package 2 Length	21.0000 cm
Package 2 Weight	1.270 kg

## Contractual warranty

Warranty	12 months
----------	-----------

Disclaimer: This documentation is not intended as a substitute for and is not to be used for determining suitability or reliability of these products for specific user applications.

# Product datasheet

Specifications



4-way intersection box – 20mm conduit  
- black

20CJB6B

EAN Code: 50610879313158

## Main

Product name	Circular Junction Box
Product or component type	4 tube entry intersection
Colour tint	Black
Quantity per set	Set of 20

## Complementary

Product destination	20mm Conduit
Product compatibility	Insert clip when used to suspend lighting units
Material	uPVC
Maximum load	3kg at 60°C

## Environment

Ambient air temperature for operation	-5...60 °C
---------------------------------------	------------

## Packing Units

Unit Type of Package 1	PCE
Number of Units in Package 1	1
Package 1 Height	7.360 cm
Package 1 Width	7.360 cm
Package 1 Length	7.360 cm
Package 1 Weight	63.500 g
Unit Type of Package 2	BOX
Number of Units in Package 2	20
Package 2 Height	19.000 cm
Package 2 Width	20.000 cm
Package 2 Length	21.0000 cm
Package 2 Weight	1.270 kg

## Contractual warranty

Warranty	12 months
----------	-----------

Disclaimer: This documentation is not intended as a substitute for and is not to be used for determining suitability or reliability of these products for specific user applications.

# Product datasheet

Specifications

## 3-way tee box - for 20 mm conduit - white

### 20CJB5W



EAN Code: 5061089313141

### Main

Range of product	Cutterwell
Product or component type	Junction box
Colour tint	White
Quantity per set	Set of 20

### Complementary

Cable entry	3 tube entry
Junction box type	Tee
Product destination	diameter: 20 mm conduit
Product compatibility	Insert clip when used to suspend lighting units
Maximum load	3 kg at 60 °C
Material	UPVC (unplasticized polyvinyl chloride)

### Environment

Standards	BS 4607-5
-----------	-----------

### Packing Units

Unit Type of Package 1	PCE
Number of Units in Package 1	1
Package 1 Height	3.400 cm
Package 1 Width	9.200 cm
Package 1 Length	11.800 cm
Package 1 Weight	51.000 g
Unit Type of Package 2	CAR
Number of Units in Package 2	20
Package 2 Height	18.000 cm
Package 2 Width	18.000 cm
Package 2 Length	23.000 cm
Package 2 Weight	1.160 kg
Unit Type of Package 3	PAM
Number of Units in Package 3	2000

---

<b>Package 3 Height</b>	106.500 cm
<b>Package 3 Width</b>	120.000 cm
<b>Package 3 Length</b>	100.000 cm
<b>Package 3 Weight</b>	132.000 kg

---

## **Contractual warranty**

---

**Warranty** 12 months

# Product datasheet

Specifications



3-way tee box - for 20 mm conduit -  
black

20CJB5B

EAN Code: 5061089313134

## Main

Range of product	Cutterwell
Product or component type	Junction box
Colour tint	Black
Quantity per set	Set of 20

## Complementary

Cable entry	3 tube entry
Junction box type	Tee
Product destination	diameter: 20 mm conduit
Product compatibility	Insert clip when used to suspend lighting units
Maximum load	3 kg at 60 °C
Material	UPVC (unplasticized polyvinyl chloride)

## Environment

Standards	BS 4607-5
-----------	-----------

## Packing Units

Unit Type of Package 1	PCE
Number of Units in Package 1	1
Package 1 Height	3.300 cm
Package 1 Width	9.000 cm
Package 1 Length	11.500 cm
Package 1 Weight	51.000 g
Unit Type of Package 2	CAR
Number of Units in Package 2	20
Package 2 Height	19.500 cm
Package 2 Width	21.000 cm
Package 2 Length	20.000 cm
Package 2 Weight	1.132 kg
Unit Type of Package 3	PAM
Number of Units in Package 3	2500

---

<b>Package 3 Height</b>	114.000 cm
<b>Package 3 Width</b>	120.000 cm
<b>Package 3 Length</b>	100.000 cm
<b>Package 3 Weight</b>	162.375 kg

---

## **Contractual warranty**

---

<b>Warranty</b>	12 months
-----------------	-----------

# Product datasheet

Specifications

2-way angle box - for 20 mm conduit  
- white



20CJB4W

EAN Code: 5061089313127

## Main

Range of product	Cutterwell
Product or component type	Junction box
Colour tint	White
Quantity per set	Set of 20

## Complementary

Cable entry	2 tube entry
Junction box type	Angle
Product destination	diameter: 20 mm conduit
Product compatibility	Insert clip when used to suspend lighting units
Maximum load	3 kg at 60 °C
Material	UPVC (unplasticized polyvinyl chloride)

## Environment

Standards	BS 4607-5
-----------	-----------

## Packing Units

Unit Type of Package 1	PCE
Number of Units in Package 1	1
Package 1 Height	7.290 cm
Package 1 Width	7.290 cm
Package 1 Length	7.290 cm
Package 1 Weight	47.000 g
Unit Type of Package 2	CAR
Number of Units in Package 2	20
Package 2 Height	18.000 cm
Package 2 Width	18.000 cm
Package 2 Length	24.000 cm
Package 2 Weight	1.084 kg
Unit Type of Package 3	PAM
Number of Units in Package 3	2880

---

<b>Package 3 Height</b>	115.000 cm
<b>Package 3 Width</b>	120.000 cm
<b>Package 3 Length</b>	100.000 cm
<b>Package 3 Weight</b>	151.344 kg

---

## **Contractual warranty**

---

<b>Warranty</b>	12 months
-----------------	-----------

# Product datasheet

Specifications



2-way angle box - for 20 mm conduit  
- black

20CJB4B

EAN Code: 3606480485503

## Main

Range of product	Cutterwell
Product or component type	Junction box
Colour tint	Black
Quantity per set	Set of 20

## Complementary

Cable entry	2 tube entry
Junction box type	Angle
Product destination	diameter: 20 mm conduit
Product compatibility	Insert clip when used to suspend lighting units
Maximum load	3 kg at 60 °C
Material	UPVC (unplasticized polyvinyl chloride)

## Environment

Standards	BS 4607-5
-----------	-----------

## Packing Units

Unit Type of Package 1	PCE
Number of Units in Package 1	1
Package 1 Height	3.200 cm
Package 1 Width	9.000 cm
Package 1 Length	9.000 cm
Package 1 Weight	46.000 g
Unit Type of Package 2	CAR
Number of Units in Package 2	20
Package 2 Height	18.000 cm
Package 2 Width	18.000 cm
Package 2 Length	23.000 cm
Package 2 Weight	1.031 kg
Unit Type of Package 3	PAM
Number of Units in Package 3	2400

---

<b>Package 3 Height</b>	106.500 cm
<b>Package 3 Width</b>	120.000 cm
<b>Package 3 Length</b>	100.000 cm
<b>Package 3 Weight</b>	143.732 kg

---

## **Contractual warranty**

---

<b>Warranty</b>	12 months
-----------------	-----------

# Product datasheet

Specifications



## 2-way through box - for 20 mm conduit white 20CJB3W

EAN Code: 5061089313103

### Main

Product or component type	Junction box
Colour tint	White
Quantity per set	Set of 20

### Complementary

Cable entry	2 tube entry
Junction box type	Through
Product destination	diameter: 20 mm conduit
Product compatibility	Insert clip when used to suspend lighting units
Maximum load	3 kg at 60 °C
Material	UPVC (unplasticized polyvinyl chloride)

### Environment

Standards	BS 4607-5
-----------	-----------

### Packing Units

Unit Type of Package 1	PCE
Number of Units in Package 1	1
Package 1 Height	3.300 cm
Package 1 Width	6.500 cm
Package 1 Length	11.500 cm
Package 1 Weight	47.200 g
Unit Type of Package 2	CAR
Number of Units in Package 2	20
Package 2 Height	18.000 cm
Package 2 Width	18.000 cm
Package 2 Length	23.000 cm
Package 2 Weight	1.050 kg

### Contractual warranty

Warranty	12 months
----------	-----------

# Product datasheet

Specifications



## 2-way through box - for 20 mm conduit – black 20CJB3B

EAN Code: 5061089313097

### Main

Product or component type	Junction box
Colour tint	Black
Quantity per set	Set of 20

### Complementary

Cable entry	2 tube entry
Junction box type	Through
Product destination	diameter: 20 mm conduit
Product compatibility	Insert clip when used to suspend lighting units
Maximum load	3 kg at 60 °C
Material	UPVC (unplasticized polyvinyl chloride)

### Environment

Standards	BS 4607-5
-----------	-----------

### Packing Units

Unit Type of Package 1	PCE
Number of Units in Package 1	1
Package 1 Height	3.4 cm
Package 1 Width	6.7 cm
Package 1 Length	11.8 cm
Package 1 Weight	40 g
Unit Type of Package 2	CAR
Number of Units in Package 2	20
Package 2 Height	18.2 cm
Package 2 Width	18 cm
Package 2 Length	24 cm
Package 2 Weight	1.03 kg

### Contractual warranty

Warranty	12 months
----------	-----------

# Product datasheet

Specifications



## 1-way terminal box - for 20 mm conduit - white 20CJB2W

EAN Code: 5061089313080

### Main

Product or component type	Junction box
Colour tint	White
Quantity per set	Set of 20

### Complementary

Cable entry	1 tube entry
Junction box type	Terminal
Product destination	diameter: 20 mm conduit
Product compatibility	Insert clip when used to suspend lighting units
Maximum load	3 kg at 60 °C
Material	UPVC (unplasticized polyvinyl chloride)

### Environment

Standards	BS 4607-5
-----------	-----------

### Packing Units

Unit Type of Package 1	PCE
Number of Units in Package 1	1
Package 1 Height	3.400 cm
Package 1 Width	6.700 cm
Package 1 Length	9.200 cm
Package 1 Weight	43.000 g
Unit Type of Package 2	CAR
Number of Units in Package 2	20
Package 2 Height	18.500 cm
Package 2 Width	23.500 cm
Package 2 Length	18.000 cm
Package 2 Weight	962.000 g

### Contractual warranty

Warranty	12 months
----------	-----------

# Product datasheet

Specifications



## 1-way terminal box - for 20 mm conduit – black 20CJB2B

EAN Code: 5061089313073

### Main

Range of product	Cutterwell
Product or component type	Junction box
Colour tint	Black
Quantity per set	Set of 20

### Complementary

Cable entry	1 tube entry
Junction box type	Terminal
Product destination	diameter: 20 mm conduit
Product compatibility	Insert clip when used to suspend lighting units
Maximum load	3 kg at 60 °C
Material	UPVC (unplasticized polyvinyl chloride)

### Environment

Standards	BS 4607-5
-----------	-----------

### Packing Units

Unit Type of Package 1	PCE
Number of Units in Package 1	1
Package 1 Height	7.290 cm
Package 1 Width	7.290 cm
Package 1 Length	7.290 cm
Package 1 Weight	42.000 g
Unit Type of Package 2	CAR
Number of Units in Package 2	20
Package 2 Height	18.000 cm
Package 2 Width	18.000 cm
Package 2 Length	24.000 cm
Package 2 Weight	936.000 g

### Contractual warranty

Warranty	12 months
----------	-----------

# Product datasheet

Specifications



## Back outlet box- white 20CJB1W

EAN Code: 5061089313066

### Main

Product or component type	Junction box
Colour tint	White
Quantity per set	Set of 20

### Complementary

Cable entry	1 tube entry
Product destination	diameter: 20 mm conduit
Product compatibility	Insert clip when used to suspend lighting units
Maximum load	3 kg at 60 °C
Material	UPVC (unplasticized polyvinyl chloride)

### Environment

Standards	BS 4607-5
-----------	-----------

### Packing Units

Unit Type of Package 1	PCE
Number of Units in Package 1	1
Package 1 Height	7.290 cm
Package 1 Width	7.290 cm
Package 1 Length	7.290 cm
Package 1 Weight	48.700 g
Unit Type of Package 2	CAR
Number of Units in Package 2	20
Package 2 Height	18.000 cm
Package 2 Width	18.000 cm
Package 2 Length	24.000 cm
Package 2 Weight	974.000g

### Contractual warranty

Warranty	12 months
----------	-----------

# Product datasheet

Specifications



## Back outlet box- black 20CJB1B

EAN Code: 5061089313059

### Main

Product or component type	Junction box
Colour tint	Black
Quantity per set	Set of 20

### Complementary

Cable entry	1 tube entry
Product destination	diameter: 20 mm conduit
Product compatibility	Insert clip when used to suspend lighting units
Maximum load	3 kg at 60 °C
Material	UPVC (unplasticized polyvinyl chloride)

### Environment

Standards	BS 4607-5
-----------	-----------

### Packing Units

Unit Type of Package 1	PCE
Number of Units in Package 1	1
Package 1 Height	7.290 cm
Package 1 Width	7.290 cm
Package 1 Length	7.290 cm
Package 1 Weight	48.700 g
Unit Type of Package 2	CAR
Number of Units in Package 2	20
Package 2 Height	18.000 cm
Package 2 Width	18.000 cm
Package 2 Length	24.000 cm
Package 2 Weight	974.000g

### Contractual warranty

Warranty	12 months
----------	-----------